

Royal Jelly, Bee Brood: Composition, Nutrition, Health

Stefan Bogdanov



image: courtesy: www.ccpollen.com

It is said that the ancient Egyptians knew royal jelly (RJ), believing it will keep the pharaoh's body young and beautiful even after he passes away and that Cleopatra used it for her cosmetics in order to keep herself beautiful. The ancient Chinese used royal jelly as a aphrodisiac²²¹.

ROYAL JELLY AS A NUTRIENT

Table 1: Nutritional components of royal jelly and nutritional requirements, after ^{232, 237, 280}

	g in 100 g	RDI (g/day)
Water	60-70	
Carbohydrates	11 - 23	320
Proteins	9 -18	50
Fat	3-8	80
Vitamins	mg /100g	RDI* (mg/day)
Niacin (B3)	4.5 – 19	15
Pyridoxin (B6)	0.2 – 5.5	1.4
Thiamin (B1)	0.1 – 1.7	1.1
Riboflavin (B2)	0.5 – 2.5	1.3
Pantothenic acid	3.6 – 23	6
Folic acid	0.01 – 0.06	0.4
Biotin (H)	0.15 – 0.55	0.045
Minerals	mg /100g	RDI* (mg/day)
Potassium (K)	200-1000	2000
Calcium (Ca)	25-85	1000
Magnesium (Mg)	20-100	350
Zink (Zn)	0.7-8	8.5
Iron (Fe)	1-11	12.5
Copper (Cu)	0.33-1.6	1.2

*- after the German Nutrition Society

The significance of royal jelly for human nutrition is relatively small. Assuming a daily intake of 2 g per day, the basic nutrients proteins, lipids and carbohydrates contained in RJ do not play a role for their RDI. The same is true for the minerals. From the vitamins there is a small contribution of pyridoxin (B6), thiamin (B1), riboflavin (B2) and biotin (H).

Bio-active ingredients

The bioactive compounds and health-promoting properties of royal jelly were reviewed in 2012²²⁹

HDA and other fatty acids

Most of the organic acids are free with rather unusual structure rarely encountered in nature, mono- and dihydroxy acids and dicarboxylic acids with 8 and 10 carbon atoms^{153, 154}, the main acid being 10-hydroxydecanoic acid (HDA, see chapter one). Numerous effects have been reported, most of them for HDA.

- antibacterial and immuno activating^{11, 16, 19, 168, 180, 238, 289, 294, 303}
- immuno-modulating, anti-cancer^{49, 70, 256, 262, 274, 275, 286}
- anti-inflammatory³⁹
- anti-diabetes²⁰³
- collagen promoting and skin protecting¹³⁵
- anti-ulcer⁵⁶
- facilitates differentiation of brain cells⁹⁰
- antidepressant in mice experiments^{108, 109}
- promotes endothelial health, antihypertensive, antihyperlipidemia^{111, 179, 295}
- estrogenic^{176, 188}
- anti-rheumatic³⁰¹
- activation of TRPA1 and TRPV1 (induces thermogenesis and energy expenditure enhancement)²⁶⁷
- causes age prolongation of *Caenorhabditis elegans*¹⁰⁰

Proteins and peptides

82 - 90 % of the RJ proteins belong to the Major Royal Jelly Protein type (RRJP) protein²³⁵. This protein belongs to the albumin protein class²⁴⁸ and has immuno-modulating activity²⁰¹. Different glycoproteins^{128-131, 182, 281, 303} and peptides have been characterised: apisimin¹⁵, one with antihypertensive activity^{177, 178} and so called jeleines with antibacterial properties^{61, 230}. Many effects have been encountered for different proteins and peptides:

- anti-oxidative^{78, 79}
- immuno-modulating, monocyte-proliferation stimulating^{127, 201}
- antibacterial^{60, 230}
- anti-inflammatory^{134, 169}
- vitalisation and anti-fatigue^{120, 249, 250}
- anti-hypertensive^{175, 179, 272}
- anti-allergic²⁰¹
- anti-diabetes¹³⁶
- collagen proliferating and skin fibroblast differentiating²⁷⁷
- lower the cholesterol levels¹²⁴

AMP-N1 Oxide

Adenosine monophosphate N1 oxide is a compound found only in RJ. Its main effects are on the centrally nervous system: it stimulates neuronal differentiation, promotes generation of all three types of cells composing the central nervous system: neurons, astrocytes and oligodendrocytes, against neuronal damage^{92, 93}

Adenosine

Adenosine is an important biomolecule with many physiological effects. For example, adenosine has a predominantly hyperpolarising effect on the membrane potential of excitable cells, producing inhibition in vascular smooth muscle cells of coronary arteries and neurons in the brain. RJ contains 5.9 to 2057.4 mg/kg adenosine²⁹⁶

Acetylcholin²⁹²

The concentration found is 1 mg/g dry weight⁹⁵

- it is a nerve transmitter, having a number of hormone-like effects in the central and vegetative nervous system

The hormones testosterone, progesterone, prolactin, estradiol have been found in RJ ²⁸⁵ see table 10.

- They increase of male and female fertility, and also male power and endurance

Polyphenols¹⁶³ have also been identified, having:

- Antioxidant effects^{43, 162, 212}

Summarising the above it seems that the unique anti-fatigue and the brain activating properties of royal jelly are mediated by HDA, by a specific proteins by AMP-N1 oxide and by RJ hormones.

FUNCTIONAL PROPERTIES

The main significance of royal jelly lies in its health-promoting properties.

Chauvin reviews the biological and pharmacological effects of RJ and states that results are often controversial. He points out that RJ injection is very risky and thus ingestion should be used instead. Sublingual application by contact of RJ in order to achieve a direct transmission of RJ into blood is also recommended in order to avoid eventual decomposition of proteins in the digestion tract ^{36, 38}

Many East European studies are extensively reviewed in the Krylov and Sokolski's RJ monograph¹⁴³. Prof. Krylov from the university of Nijni Novgorod has done many original contributions on this topic. The original Russian references will be often referred to as Krylov-Sokolski, as they are not accessible to non-Russian readers.

The different biological effects reported in the literature are compiled in table 2. For better clarity the different effects are summarised according to the type of effect.

Antibacterial, antiviral and fungicidal effects

Many studies have shown that royal jelly has antibacterial activity. These properties have been reviewed. RJ inhibits both gram-positive and gram-negative bacteria, but the first group is stronger inhibited: Antibacterial activity towards different bacteria, many of them pathogenic, has been registered: ²⁵⁴. The antibacterial activity of RJ was reviewed in 2016⁶³

The antibacterial activity is due to: *HDA* ^{19, 63, 238} and to *different proteins and peptides* ^{61, 63, 67, 254, 293}

Antibiotic resistance increasingly encountered *today, e.g against Pseudomonas aeruginosa* could be overcome by *RJ* ¹⁵⁵

Bio-stimulating and anti-aging activity



and basal metabolism ³⁸.

The role of RJ in the bee colony is to stimulate and increase the growth of larvae, increasing metabolic processes. The most evident effect is the increase of weight of many animals, reported after ingestion of RJ (see table 2). In an early work it was found in an animal experiments that RJ increases oxygen metabolism of tissues and causes increased activity in mice, due to increased concentration and use of blood glucose ⁷³ RJ increases also tissue oxygen consumption and thus increases performance and endurance. These effects are due to RJ induced increase of respiration and oxidative phosphorylation ¹⁴³. The anti hypoxic, i.e. oxidative effect of royal jelly in animal experiments can be also mentioned here ¹⁴³. It was also found that RJ increases the metabolism of humans (especially increased were breathing frequency

RJ and its related substances extend lifespan in *C. elegans*, suggesting that RJ may contain longevity-promoting factors. Further analysis and characterization of the lifespan-extending agents in RJ broaden our understanding of the gene network involved in longevity regulation in diverse species and may lead to the development of nutraceutical interventions in the aging process¹⁰¹

Table 2: **Biological and pharmacological effects of royal jelly in animal and cell culture experiments**

Effect	References
Antibacterial, fungicidal, antiviral, antiparasitic effects	
Antibacterial	1, 11, 63, 67, 98, 99, 151, 254, 293, 302
Fungicide	254, 132
Antiviral	45, 254
Active against various parasitic <i>Trypanosomidae</i>	132, 161
Bio stimulatory effects, anti-aging, fertility-enhancing	
Increases growth and weight of chickens, turkeys, ducks, rabbits, guinea-fowls, pigs, calves, guinea pigs, mice and rats	20-29, 36, 42
Anti-fatigue, increases activity, improves resistance to stress	97, 120, 143
Increases oxygen consumption in tissues in vitro, anti-hypoxia	73, 143, 218
Life-prolonging in mice	107
Prevents the progression of Sarcopenia in aged mice	198
Estrogenic and gonadotropic effects in cells and in rats	97, 181, 257
Increases testosterone levels in rabbits	52
Against infertility of male rabbits, improves fertility in rats, hamsters and rabbits	51, 52, 88, 133
Increases reproduction capacity of rats and sheep, Increases female ewes fertility	103, 104, 138-140
RJ fed mice have higher sperm motility, higher sperm concentration and lesser sperm abnormality, improves the quality of buffalo sperm in vitro	123, 240
Testis protective effects in rats	43
Immuno-modulating effects: anti-cancer, anti-allergy and anti-inflammatory	
Immuno-stimulating activity in animals or in cell cultures, increase of leucocytes count	5, 53, 70, 143, 146, 172, 200-202, 247, 258, 286, 289, 297, 298
Anti-tumor effects in cell culture and animal experiments (ingestion or injection)	17, 44, 47, 195, 205, 206, 262, 273, 276
Inhibits autoimmunity in mice	171
Anti-inflammatory in cell culture and animal tests	8, 134
Cardiovascular effects	
Anti-hypertensive, hypotensive, vasodilatative effects in animals	7, 147, 175, 243, 270, 271
Reduces serum cholesterol and TG levels, increases HDL levels, lowers plasma fibrinogen levels and thrombosis	143, 148, 41, 228, 241
Cardio-protective in animal experiments, prevents myocarditis, promotes good heart beat and optimum blood coronary current of stopped isolated heart,	143, 145
Increases blood levels of thyroxine, cortisol, albumin/globulin ratio and decreases serum proteins after oral administration in rats	36, 38
Increases number of blood cells	143
Effects on the central and vegetative nervous system	
Activates and protects CN activity, facilitates the differentiation of brain cells.	73, 89-91, 143
Increases phosphorylation of the CNS to increase of rat brain cholinesterase activity	143
Acetyl-choline like effects on intestine (contraction) and on respiration smooth muscle innervation (bronchoconstriction)	143
Tranquillisation of rats	36, 38
Diminishes secondary neuronal damage in rats	10
Improves the spatial memory in rats	226
Anti-oxidation, hepatoprotective, radiation-protective	
Anti-oxidative	37, 107, 112, 113, 193, 194
Hepato-protective in animal experiments, restores the function of alcoholic liver diseases in a rat model	143, 159
Reduces stress and teratogenicity, pulmonary edema, hepatic or renal damage in rats due to intoxication with mycotoxins	50, 144
Protects cells from apoptosis, mitogenic effect, prolongs cell proliferation, enhances albumin production.	118, 121, 200
Radiation-protective	72, 210, 211, 217, 287

Skin protection, antidiabetic, gastroprotection, osteoprotection and others	
Skin protection: promotes building of collagen in cell cultures and in rat model	135, 211
Suppresses the development of atopic dermatitis-like skin lesions in rats	263
Against skin itching in a mice model	299
Anti-melanogenic activity leads to skin whitening in melanoma cells	84
Anti-hyperglycaemic action, prevents insulin resistance, antidiabetic	34-36, 199, 203
Decreases experimental colitis in rats and mice	122, 173
Gastroprotective in a rat model	58
Prevents osteoporosis in rats and stimulates bone formation	96, 196, 283
Osteoinductive and anti-inflammatory effects in periodontal disease model	300
RJ topical application has a healing effect on oral mucositis in hamsters	255, 290, 291
Prebiotic properties in rat gut and in bacteria isolated from human infants and in isolated bacteria	77, 83, 192

Immuno-modulating effects

Immunomodulating effects lay an important effect in cancer, allergy, and inflammation. They can be activating and deactivating. In the case of RJ the activating effects predominate as they have been reported by many workers (see table 1).

Krylov reports on the increase of all blood cells and the α -1 and α -2 globulins fraction after RJ ingestion¹⁴³. The effect on the alpha globulin fraction is probably connected to the reported immunomodulating activity of RJ. RJ induces the formation of T-lymphocytes, responsible for the immune response against viruses and cancer cells and play an important role in inflammation processes²⁸⁶. This activity seems to be due to 10-HDA. Tamura et al.²⁶² showed in experiments with rats that inhibition of tumor growth of slow growing tumors (Ehrlich and Sarcoma strains) is better than that of fast growing ones (leukaemia).

Recently the effect of RJ was tested on tumour development and metastasis in murine tumour models. RJ did not affect the formation of metastases when given intraperitoneally or subcutaneously. However, synchronous application of tumour cells and royal jelly intravenously significantly ($p < 0.001$) inhibited the formation of metastases²⁰⁶.

The immuno-activating effects of RJ are due to its main protein apalbumin¹⁶⁸. In one case it has been reported that RJ has also immuno-inhibitory anti-allergic effects in mice²⁰¹.

Anti-inflammatory effects, reported for RJ, are hormone-like effects reducing inflammation. Tissue inflammation is generally thought to be a major cause for body degeneration and ultimate death.

Effects on the nervous system



RJ has also a stimulating, activating effects on the central nervous system, CNS⁷³ and also on the vegetative NS¹⁴³. Krylov reports on acetyl-choline like effects on the intestine and on the innervation of the smooth respiration muscle. These effects result in an improved muscle tonus and activity. Intake of Apilac, a Russian preparation based on RJ, leads to an increased phosphorylation of the CNS, to increase of rat brain cholinesterase activity. High doses of 100 mg/kg to mice lead to structural changes of nerve neurons¹⁴³.

RJ shows neurotrophic effects on the mature brain via stimulation of Glial Cell-Derived Neurotrophic Factor, GDNF production. The enhanced expression of neurofilament H mRNA is involved in events subsequently caused GDNF. RJ may play neurotrophic and/or neuroprotective roles in the adult brain through GDNF⁸⁷.

Alzheimer's

In Alzheimer's Disease (AD) the hippocampus part of the brain is diminished in size and function. RJ ameliorates neuronal function by regenerating hippocampal granule cells that function in the cognition process⁹⁴. 10-HDA increases the amount of hippocampal neurons growth rate and promotes the proliferation of primary cultured hippocampal neurons²⁶⁹. Recent brain research has elucidated the mechanism of action for the RJ effects on the CNS. A unique RJ component, cAMP-N₁ oxide, not found in any other materials, acts directly on neuronal

differentiation and stimulates the formation of different brain cells⁸⁹. RJ facilitates also the differentiation of all types of brain cells: neurons, astrocytes, and oligodendrocytes⁹⁰.

Royal jelly may be a promising agent for the activation of neural stem cells in a mature brain expected to differentiate into neurons or glial cells. Recent investigations clarified a relationship between the neurogenesis in the dentate gyrus of the hippocampus and the symptoms of depression, expecting efficient use of royal jelly to activate neurogenesis. Reduction of neuronal death and an increase of neurogenesis in Alzheimer's disease and Parkinson's diseases may be also supported by royal jelly, although a detailed animal experiment is necessary⁶⁸.

To prove the pharmacological actions of honeybee royal jelly (RJ) on the nervous system, the effects of RJ on CRE-mediated transcription. RJ increased CRE-mediated transcription in PC12D cells were examined. Moreover, CRE-mediated transcriptional activity by RJ was enhanced by nobiletin. U0126, a MEK inhibitor, inhibited CRE-mediated transcription by combining RJ plus nobiletin without affecting transcription by RJ alone. These results suggest that RJ stimulates CRE-mediated transcription via an ERK-independent cascade, whereas the increasing CRE-mediated transcriptional effect by nobiletin is dependent on ERK phosphorylation⁶⁵

AD is associated with impairments of learning and memory. Therefore, the present study was designed to examine the effect of RJ on spatial learning and memory in rats after intracerebroventricular injection of streptozotocin (icv-STZ). Rats were infused bilaterally with an icv injection of STZ, while sham rats received vehicle only. The rats were feed with RJ-contained food (3% w/w) (lyophilized RJ mixed with powdered regular food) or regular food for 10 days. Then spatial learning and memory was tested in the rats by Morris water maze test. Results showed that in icv-STZ group latency and path length were increased as compared to sham group, also icv-STZ rats less remembered the target quadrant that previously the platform was located; however, these were protected significantly in STZ group that received RJ-containing food. Results support the potential neuroprotective role of RJ and its helpful effects in AD³⁰⁷.

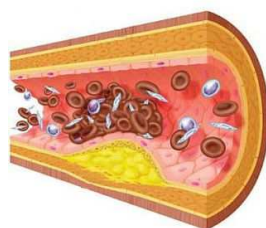
RJ increased CRE-mediated transcription in PC12D cells. Moreover, CRE-mediated transcriptional activity by RJ was enhanced by nobiletin. U0126, a MEK inhibitor, inhibited CRE-mediated transcription by combining RJ plus nobiletin without affecting transcription by RJ alone. These results suggest that RJ stimulates CRE-mediated transcription via an ERK-independent cascade, whereas the increasing CRE-mediated transcriptional effect by nobiletin is dependent on ERK phosphorylation. Combining RJ plus nobiletin may activate effectively neuronal functions via enhancement of CRE-mediated transcription, and thus can influence beneficially AD⁶⁶

Royal jelly improves spatial learning and memory performance of aged rats and the contents of monoamine neurotransmitters as well as SOD activity, and reduce MDA content. Therefore, royal jelly can regulate the metabolism of monoamine transmitters to result in its anti-aging function and improve learning and memory capability²¹⁹

RJ/eRJ supplementation delayed the $A\beta$ -amyloid ($A\beta$)-toxicity induced body paralysis in *C. elegans* AD model. The genetic analysis indicated that the RJ/eRJ mediated $A\beta$ toxicity alleviation required Insulin/IGF Signaling (IIS) pathway and DAF-16, rather than HSF-1 and SKN-1. Further research found that RJ/eRJ relied on DAF-16 to significantly improve the protein solubility in aged worms, which implied that RJ/eRJ supplementation promoted proteostasis and reduced proteotoxicity in AD worms. Additionally, RJ/eRJ also increased the solubility of $A\beta$ species. In considering that RJ/eRJ supplementation slowed down the $A\beta$ -induced paralysis in *C. elegans*, it is possible that RJ/eRJ mediated protection against $A\beta$ toxicity might be dependent on increasing the solubility of $A\beta$ species. These findings revealed that the anti-aging function of RJ/eRJ supplementation and underscored the relationship between the improved proteostasis and the prevention of neurodegenerative disorders²⁸⁸

Long term administration (18 months) of 50-100 mg dry powder RJ /kg improves the spatial memory in rats²²⁶

Cardiovascular effects



RJ influences different blood parameters: reduction of serum cholesterol and triglycerides levels, increase of high-density lipoprotein-cholesterol levels, lowering of plasma fibrinogen levels and thrombosis (table 1). Due to these effects RJ caused cardioprotective effects in physiological and biochemical experiments with mice¹⁴³.

Experiments on the isolated heart showed that RJ increased the blood pressure of the heart chamber by 60 %, the maximum velocity of the myocard contraction by 22 and the maximum velocity of the myocard relaxation by 87 %. The coronary blood stream was increased by 42 % and the diastolic blood pressure was reduced by 20 %. These effects are explained by an increased synthesis of bio-energy, ATP in the heart muscle. On the basis of these experiments RJ can be

recommended as a cardio-protectant. Krylov reports also on experiments in rats of positive effects of RJ in adrenaline-induced myocarditis¹⁴³.

Anti-hypertensive, hypotensive, vasodilatative effects in animals has been reported by different authors (table 2).

RJ peptides have been found to have an anti-hypertensive activity¹⁷⁹

Other effects in animal and cell experiments (see table 2)

- anti-oxidative and radiation-protective and hepatoprotective (liver-protecting
- hyperglycaemic, preventing insulin resistance
- stimulating bone formation and promoting bone healing in rabbits, preventing osteoporosis in rats
- skin protection, promotes building of collagen in cell cultures, against atopic dermatitis and skin itching,
- suppressing the development of atopic dermatitis-like skin lesions in rats
- prebiotic effect in rat gut and in bacteria isolated from human infants: growth promotion of Lactobacillus und Biphidus bacteria
- antidiabetic
- against oral mucositis
- gastro-protective, against experimental colitis, restores the function of alcoholic liver diseases

ROYAL JELLY FOR HEALTH AND MEDICINE

NUTRITION

Dietology and prophylactics

Royal jelly is a functional food and thus an ideal additive for prophylactic purposes, for health protection due to its functional properties:

- ✓ Bio-stimulatory
- ✓ Anti-Fatigue
- ✓ Anti-Aging, Life-prolonging
- ✓ Optimal sexual activity
- ✓ Immuno-modulating, anti-cancer
- ✓ For good cardiovascular health
- ✓ Activates Central and Autonomous Nervous System and improves memory
- ✓ Anti-oxidative (against chronic diseases)
- ✓ Hepatoprotective
- ✓ Radiation protective
- ✓ Skin protection
- ✓ Antidiabetic
- ✓ Anti-osteoporose
- ✓ Gastroprotection

Due to its ideal effects in newborn children it is an ideal additive to their food. Hovanska examined the influence of infant nursing food containing also RJ and pollen in comparison with infant food without these ingredients. The infants fed on the food with the ingredients had a better adaptation to stress situations¹⁰².

Krilov and Sokolski prepared a tablet containing 45 mg dry RJ, 30 mg ascorbic acid, the resting 265 mg containing lactose, sucrose, starch and calcium stearate. The authors tested the tablets, given to test students 3 times per day. While there was no influence on normal students, test persons with lowered

immunity was beneficially influence, measured by normalised ratios between blood albumin and globulins ratios and the content of A,B, G immunoglobulin proteins and of other parameters¹⁴³.

In summary, RJ has a variety of biological properties which make it an ideal additive with rejuvenating, anti-aging. It can easily be combined with other compounds, vitamins, antioxidants and trace elements.

Royal jelly as a supplement for professional sportsmen for better performance



In a series of tests in Russia a Russian preparation **Ap-iton 25** was tested in highly trained sportsmen. The tests were carried out at the beginning and after 21 days, the intake of RJ was 4 pills sublingually daily, each one containing 369 mg lactose-glucose absorbed RJ, in total corresponding to about 1.2 g dry RJ daily, a control group took placebo. In the tests the resilience of sportsmen was tested in a treadmill, until the sportsmen rejected a further load increase, the load being changed every minute. The endurance of the sportsmen who took the RJ supplement was significantly better than the controls after 10 and 21 day of the test and remained significant 5 days after the sportsmen stopped taking the supplement. It is known that in physical performance the endurance decreases because of an increase of blood lipid hydroperoxides. An antioxidant as RJ should theretically inhibit the building of the lipid peroxidaton. Indeed, there was a highly significant difference between the test and the control groups regarding this parameter, on the 10th and 21st day of training, this difference persisted 5 days after stopping supplementation. It is known that immunity decreases upon persistent physical strain. This results in a decrease of immunogloblines IgA, IgG and IgM. The humoral immunity was tested by measuring these parameters in the blood of the test persons. The IgA concentration in comparison with the initial values was higher than the controls after 21 days, while the change of the other two parameters was not significantly changed. The number of leucocytes, lymphocytes, T-lymphocytes, T-helpers and T-suppressers in the blood are a function of the cell immunity. All of these parameters were significantly higher in the test sportsmen after 21 days, when the values were compared to the initial ones, see page163-167 of ¹⁴². This preparation is sold in Russia and is accepted as a sport supplement by the Russian Antidoping Agency, see <http://comilfo-api.com/>

A 45% ethanol solution containing 2.4 g native RJ in 100 ml was tested in a sport performance of 17-20 year old female students, who took 3 times 10 drops (approx. 100 mg RJ). Following tests were carried out: measurement of body mass, performance of Stange's breath holding test, measurement of the viso-motoric reaction, hanging on the bars, 30 m runs with maximal speed, measurement of heart rate afterwards, then a 5 minute step test with a step height of 30 cm, 30 climbs per minute followed by a 5 minute rest. There was a significant increase of the reaction of the organism to hypoxia, as measured by the Stange test and an improvement of the viso-motoric reaction²³⁴.

Swimmers

Royal jelly and ubiquinone-10 in honey (10 g honey, 400 mg RJ and 60 mg U-10 per day, for 10 days 20 minutes before training) have a favorable effect on vago-sympathetic balance skilled swimmers preventing the risk of developing asthenia and the failure of adaptive mechanisms in conditions of intensive training activities. It was also found that the preparation modulates the neuro-humoral and metabolic levels of a regulation of a heart rhythm, preventing the risk of the development of energy-deficiency¹⁴¹

The same mixture was tested by the swimmers reduces the lactate levels in blood plasma, stimulates the oxygen-transporting function of blood and improves the performance as verified by the anaerobic interval exercise tests²⁰⁸

Football players

In a test with young football players the effect of an intake of a RJ supplement, five times a week for two months, on 13 morphological characteristics in initial and final measuring, tested against a control group (no intake). On the basis of the research results it could be concluded that football players from the experimental group who used royal jelly had statistically significant increase of body height and muscle components, and also a decrease of fat in the final measurement as compared to the initial ones. The results showed statistically significant increase in circumference above knee and circumference of lower leg in experimental group on the end of the experimental treatment. The examinees from experimental group had higher average values in body height, body mass, muscle and bone component, and lower average value of fat¹¹⁵.

MEDICINE



Royal jelly is especially popular in Asia, see Krell ¹³⁷. An important part of the clinical research comes also from Asia. However, most of the original Chinese literature, the biggest producer of RJ of the world, is not accessible to non-Chinese.

Having in mind the many different biological effects of RJ it is difficult to imagine specific medical effects. In the Western World there are only very few clinical studies with RJ. In more recent Eastern European monographs there are extensive descriptions of the clinical uses of RJ: Shkenderov and Ivanov, 1983²⁴⁴ Ludyanski, 1994¹⁶⁴, Krylov and Sokolski, 2000¹⁴³, Asafova et al. 2001⁹ and Krylov et al. 2007¹⁴². Many of the clinical applications described here are taken from these monographs, the original citations could not be consulted as they are not accessible to the author. The majority of the cited

studies are old and do not stand the criteria for modern clinical tests, i.e. double blind studies or with necessary controls. However they are carried out with a considerable number of patients and in some of the studies control treatments have been carried out.

Table 3: Medicinal effects of royal jelly in humans

Use	References
Pediatrics: in premature babies or with nutritional deficiencies: improvement of general conditions, increase in weight, appetite, red blood cells and haemoglobin	41, 143, 170, 187, 225, 227, 233, 244
Geriatrics: improves general condition and weakness of old people relief of menopausal problems,	46, 143, 164, 244, 259, 284
Improves vitality, anti-aging: improved erythropoiesis, glucose tolerance and mental health; Improvement of memory, neuro-vegetative activation and mental health	143, 185, 244
Against stenocardia and after heart infarct; arteriosclerosis and atherosclerosis; hypertension, hypotension	62, 80, 143, 213, 244, 284
Against respiratory diseases, asthma	143, 149, 244, 253
Against eye diseases, e.g. blepharitis, conjunctivitis and corneal burn, disturbed eye blood circulation;	143, 220, 265
Bio-stimulatory, improves physical performance of humans and resistance to hypoxia	143, 244
Against diabetes	143, 189, 231
Against cancer	117, 298
Against gastric, gastric and duodenal ulcer	110, 143
Improves regeneration of skin in wounds	71
Against degenerative rheumatism	69
Against warts, acne, ulcers, seborrhoe, neurodermitis	149
Against renal disfunction	9

PEDIATRY, NURSING

RJ activates a number of physiological processes and has a stimulating effect on biological growth. Thus its main medicinal use is in pediatrics, nursing and geriatrics (see tables below). It has a proven effect on the increase of weight of different animals supposing its use in young infants for the same purpose. In the references cited in the table, beneficial effects have been observed in infants with nutritional deficiencies and premature babies or: improvement of general conditions, increase in weight, appetite, red blood cells and haemoglobin.

Table 4 : Royal jelly in peditary and nursing

Author, clinical test, disease	RJ intake, recommendation, results
Pediatry	
Lebedeva, 1959, increase of weight and apetite of 1 year old children ¹⁵²	Intrarectal intake of 5 mg lyophylized RJ, 3 times a day
Fateeva and Rochal, ⁵⁷ Against hypertrophy and lacking appetite of 4 month to 3 years old children	Intrarectal intake of 5 mg lyophylized RJ by smaller children and twice 10 mg sublingual intake by the older ones. 35 children were treated successfully: After 2-3 rd day the children began eating, after 15 days the average weight increase was 200 g per day
Iliash ¹⁰⁶ , Vasileva ²⁷⁹	Similar results for similar symptoms as above
Magdalena, 1965 ¹⁶⁶ . treatment of maldevelopment of breast infants	Comparing the effectivity of different RJ preparations to treat (fresh, lyophilised, RJ in honey) it was concluded that best results were achieved with fresh RJ
Gyuzikina 1993, 1998 ^{81, 82}	In a trial with premature born children with <i>Candidas</i> infections Apilac (contains 10 mg dry RJ) was given for 3 weeks the infections decreased, together with a good weight increase.
Dmitrieva et al. 1994 after ¹⁴²	Use of royal jelly in new born; positive development of the bactericide properties of the skin and elimination of bacterial infections
Destekina, Iliash 1974, after ¹⁴² Popova, 1960 ²²²	Successful use of Apilac in new born children with brain trauma RJ was also successfully used in the treatment of Herters intestinal infantilism (disturbance of nutrition in infants)
Mahmoud 1997 ¹⁶⁷	RJ was given to premature babies in doses of 1 gr per day for 5 days. The babies had a higher weight gain and a higher blood glucose concentration (within limits) than the controls. The authors presume that RJ, and also honey, cause an increased appetite, and thus a higher assimilation of food.
Nursing	
Zweer ³¹⁰	30 mg of dry RJ per day was given sublingually to nursing mothers having big blood losses during the birth. Within 8-9 days their blood haemoglobin was normalized.
Zweer ³⁰⁹	Similar experiments but with a control group. 25 premature-born children, 30-60 mg RJ was given to the nursing mothers. 76 % of the children recovered, while in the control group the recovery was 46%. The lactation of the 61 % of the nursing mothers (n=93) was improved, while in the control group (n=100) the success rate was 16 %.

GERIATRY

Table 5 : Royal jelly in geriatry

Author, clinical test, disease	RJ intake, recommendation, results
Different authors, treatment of different geriatric diseases ^{46, 164, 284}	Effective in the treatment of arteriosclerosis, weakness and menopause
Vitek and Janci, 1968 ²⁴⁴ treatment of poor blood circulation in the brain, local brain damages, Parkinson, astenic and chronic neurosis.	Summary of the experience of several authors treating with RJ different diseases typical for aged persons: 113 patients were examined. 71% of the cases had an improved condition while 13 % experienced complete healing. Best results were achieved in treating weakness while Parkinson was at least influenced.
Valiukiene et al. 1997 ²⁷⁸ , weakness	Intake by 23 volunteers 45 to 89 years old of Apilac tablets containing 70 mg lyophilised RJ, 2 times a day for 25 days: disappearance of dizziness and weakness, improvement of sleep etc. 74 % of the persons had a decreased cholesterol and triglyceride content, increased blood counts of immunoreactivity factors

RJ has been successfully used to improve the general condition and weakness due to old age. As sclerosis, weakness, menopause etc. In these treatments, the cardio-protective, anti-atherosclerosis and anti-arteriosclerosis effects of RJ should also play a role. Fujii hypnotises that RJ gamma globulin and gelatine collagen are responsible for the anti-geriatric skin activating action of RJ⁶⁴

Menopause

A total of 36 postmenopausal healthy women were studied in a prospective follow-up study. Participants received 150 mg of RJ daily for three months. Circulating cardiovascular risk markers [lipid profile, antithrombin-III (ATIII), Protein C, Protein S, Plasminogen Activator Inhibitor-1 (PAI-1)] and bone turnover parameters [Total calcium, phosphate (P), parathormone (PTH), total type-1 Procollagen N-terminal (P1NP), Osteocalcin and serum collagen type 1 cross-linked C-telopeptide (CTX)] were compared between the baseline and the three-month visit. Results: The RJ used in this study was particularly rich in medium chain fatty acids, compounds with hypolipidemic properties, which comprised 63% of the dry weight fatty content. RJ treatment resulted in a significant increase in high density lipoprotein - cholesterol (HDL-C 60.2mg/dL±12.3 versus 64.7 mg/dL±13.9, 7.7% increase, p=0.0003), as well as in a significant decrease in low density lipoprotein - cholesterol (LDL-C, 143.9±37.5 versus 136.2±32, 4.1% decrease, p=0.011) and in total cholesterol (224.4±38.6 to 216.1±36.5, 3.09% decrease, p=0.018). No statistical significant changes were found in the remaining cardiovascular or the bone turnover parameters. The intake of RJ 150 mg for three months is associated with significant improvements of the lipid profile of postmenopausal women. RJ supplementation may offer an alternative method of controlling the menopause - associated dyslipidemia¹⁵⁰

Several causes can disturb the quality of life in postmenopausal women. Stress, urinary incontinence is one of the factors that can influence the quality of life of women, since they evade social activities and limit their behavior. Vulvovaginal disorders adversely impacts sexual action, psychosocial health, and partner relationships. The therapeutic properties of vaginal cream of royal jelly and estrogen on quality of life, sexual and urinary problems in postmenopausal women were tested in a randomized controlled clinical trial on 90 married postmenopausal women 50 to 65-year-old. A total of 90 women were randomly distributed to three groups and were treated with vaginal cream of royal jelly 15%, lubricant, and conjugated estrogens for three months. Before and after intervention, quality of life and vaginal cytology were evaluated. Data was analysed by SPSS 16 using ANOVA and Tukey tests. Vaginal royal jelly is considerably more effective than conjugated estrogens and lubricant in the improvement of quality of life, sexual and urinary function in postmenopausal women (p<0.05). Results of Pap smear (test for early detection of cancer in the cervix of the womb) showed that improvement of vaginal atrophy in conjugated estrogens group was better than other groups (p<0.001), and there was no significant difference between lubricant and royal jelly groups (p=0.89). The effectiveness of vaginal royal jelly in treatment of sexual and urinary problems of postmenopausal women is related to its estrogenic properties and could be suitable in promotion of life quality in postmenopausal women²³⁹

Zweer (1974) reported also on the the successful treatment of 100 women from 40 to 62 years with climacterium problems. After an intake of twice 20 mg RJ for 2 to 4 weeks the symptoms disappeared in the majority of the patients: hot flashes, sleeplessness and irritability disappeared, work capacity improved³¹¹.

In Russian apitherapy RJ has been successfully used in women with climacterium and sexual dysfunction, as mentioned by Ludyanski (see table below).

Men-related problems

The benefit of royal jelly (RJ) on prostatic-specific antigen (PSA), post-void residual (PVR) volume and International Prostate Symptom Score (IPSS) in benign prostatic hyperplasia was tested. For the study, a group of 40 men were administered 38 mg of RJ over a period of three months, their PSA values, prostate volumes and the volumes of their transitory prostate zones, PVR and IPSS values were measured at the end of the first month, and at the end of the third month. RJ reduced PSA scores and improved IPSS values. Since the use of RJ did not lead to any significant reduction in PVR, prostate volume, or to any involution of the transitory zone, it appears that it may only affect the blood marker of prostatic hyperplasia and to improve quality-of-life (QoL) in those patients. Overall, in comparison to phytotherapy and conventional therapy, RJ had similar positive effects on QoL in patients with BPH, however it exhibited markedly better effects on reducing PSA levels in blood. The therapeutical use of RJ exhibited no side effects²⁰⁹

A randomized placebo-controlled, double-blind trial with 61 healthy volunteers aged 42-83 years, a royal jelly group (n = 31) and a control group (n = 30) was carried out. Three thousand mg of royal jelly (RJ) or a placebo in 100 ml liquid/day were ingested for 6 months. The primary outcomes were changes in anthropometric measurements and biochemical indexes from baseline to 6 months after intervention. Thirty subjects in the RJ group and 26 in the control group were included in the analysis of endpoints. In an adjusted mean change of the variables from the baseline, significant differences between the two groups could be found in red blood cell counts (+0.16x10⁶ /μL for the RJ group vs. -0.01x10⁶ /μL for the control group, P = 0.0134), hematocrit (+0.9% vs. -0.8%, P = 0.0251), log (fasting plasma glucose) (+0.01 ± 0.01 log mg/dL vs. +0.05 ± 0.01 log mg/dL, P = 0.0297),

log (insulinogenic index) (+0.25 vs. -0.13, $P = 0.0319$), log dehydroepiandrosterone sulfate (DHEA-S) (+0.08 log $\mu\text{g/dL}$ vs. +0.20 log $\mu\text{g/dL}$, $P = 0.0483$), log testosterone (T) (+0.12 \pm 0.04 log ng/mL vs. -0.02 \pm 0.05 log ng/mL, $P = 0.0416$), log T/DHEA-S ratio (+0.05 \pm 0.05 vs. -0.23 \pm 0.59, $P = 0.0015$), and in one of the SF-36 subscale scores, mental health (MH) (+4 vs. -7, $P = 0.0276$). Six-month ingestion of RJ in humans improved erythropoiesis, glucose tolerance and mental health. Acceleration of conversion from DHEA-S to T by RJ may have been observed among these favorable effects¹⁸⁵

ROYAL JELLY FOR SEXUAL DISFUNCTIONS AND GOOD FERTILITY

RJ makes fertile queens out of infertile worker bees. Are there similar effects in vertebrates?

Women

Premenstrual syndrome (PMS) are physical and emotional symptoms that occur in the one to two weeks before a woman's period. They may have negative effects on women's health and sometimes need therapeutic non-pharmacological management. A randomized, triple-blind, placebo-controlled clinical trial, which was conducted in Tehran University of Medical Sciences female dormitories between December 2011 and October 2012. The study population comprised 110 medical sciences student with PMS, whom were randomly assigned to an intervention or a control group. Each participant in the intervention group took one 1000 mg Royal jelly capsule orally per day, starting on the first day of menstruation and continued the same treatment daily throughout two consecutive menstrual cycles, while participants in the intervention group took placebo capsules as same method. The outcome measure in this study was PMS score as obtained through the Premenstrual Profile 2005. The mean of personal characteristics and baseline level of the premenstrual score before intervention did not differ between groups. After two consecutive months consumption of Royal Jelly, PMS score had decreased from 23.17 \pm 17.43 to 11.42 \pm 14.58 (mean change: 11.75; 95% confidence interval [CI]: 8.31-15.19) and in Placebo, PMS score changed from 21.48 \pm 16.39 to 20.27 \pm 15.76 (mean change: 1.20; 95% CI: -1.69 to 4.10). Also difference between mean changes was significant (mean difference: 10.54; 95% CI: 6.10-14.98). The results of the study demonstrated that 2 months consumption of Royal Jelly was effective in reducing PMS²⁶⁰

Infertility

As RJ has estrogenic and proven effects to increase animal fertility (see table 2) it could also influence positively human fertility. In a study on the use of RJ against sheep infertility¹⁴⁰ a study was cited, that RJ is used to increase the fertility of men and women⁴. In a book about infertility by R. Lewis, it is claimed that said to improve fertility in both men and women, in men by increasing the quality of their sperm, and in women by increasing the quality of their eggs¹⁵⁸.

An intravaginal application of mixture of honey and royal jelly was successful for treating male factor infertility (asthenozoospermia)³, and also of treating female infertility by a collagen-like promoting action on fetal membranes².

An Ukrainian study in 2013 the preparation Enduran Forte, based on RJ was successfully used to treat human male infertility due to inflammation of the reproduction organs. 500 mg RJ daily for 3 months. Spermatogenesis was significantly increased, and sperm volume, spermatodoid mobility and concentration was improved⁷⁴

HEART AND BLOOD CIRCULATION DISEASES

Arteriosclerosis

According to Krylov and Sokolsky and Krylov et al.^{142, 143}:

Kadiseva (1962) report on a successful treatment of arteriosclerosis by treatments of 20-30 mg RJ daily for 40 days.

Zaitzeva and Poryadina (1962) report on the use of Apilac (10 mg dry RJ) twice a day for one month in arteriosclerosis patients. Best results were achieved in patients with initial forms of the disease. Kadiseva (1962) treated successfully arteriosclerosis patients by using 10 day Apilac treatments: initially increasing from 10-20mg, then from 20 to 30 mg, the final two periods decreasing 30-20 and 20-10.

*According to Asafova et al.*⁹:

Dudaev, Ljusov (1988) used RJ against the same disease (0.5 g RJ per day sublingually), resulted in decrease of cholesterol.

Other reseach

Positive results on the blood arteriosclerosis and atherosclerosis parameters , cholesterol and triglycerides, were found by Kaczor et al. (1962)¹¹⁶ and Vittek (1995)²⁸², in the latter studies cholesterol was lowered by 14 % in people with moderately high cholesterol levels.

RJ 6 g per day was taken by humans for 4 weeks. Serum total cholesterol (TC) and serum low-density lipoprotein (LDL) decreased significantly compared with those of the control group ($p < 0.05$). There were no significant differences in serum high-density lipoprotein (HDL) or triglyceride concentrations. Moreover, the relationship between the serum cholesterol and lipoprotein levels was investigated. Among the lipoprotein fractions, small very-low-density lipoprotein (VLDL) was decreased ($p < 0.05$) after RJ intake. The results suggest that dietary RJ decreases TC and LDL by lowering small VLDL levels⁸⁶

A trial by Muenstedt et al. in 2009 failed to detect immediate changes of blood lipids after RJ intake¹⁹⁰., another trial by the same authors found that RJ increases HDL, not in all but only in older patients¹⁹¹

Other heart diseases

Stenocardia (Angina pectoris)

According to Krylov and Sokolsky and Krylov et al.^{142, 143}:

Nemanov (1959) and Mistenko (1960) used RJ for a successfull treatment of stenocardia by sublingual ingestion of 10 mg dry RJ, 3 times a day for 2-4 weeks. The effect of RJ was gradual, complete healing was after 4 week, the effects are not immediate like that of nitroglycerine.

Nisov and Lupachev (1962) treat successfully stenocardia by treatment with Apilac, the effects are not immediate like nitroglycerine, they are explained the effect by the normalisation of the blood protein pattern.

Okorokova and Fomina (1993) was used sublingually 200 mg dry RJ for 20 days, alone or in combination with anti-stenocardia agents like nitroglycerine. After 2-3 weeks the intake of nitroglycerine could be interrupted or the dose decreased by a factor of 2. The heart dynamic factors as arterial blood pressure and normalisation of EKG improved too.

Okorkov et al. (1993) report in two clinical studies: a) on stenocardia patients and b) of 42-55 years old women with neuro-vegetative-hormonal based myocardial dystrophy using RJ in combination with bee venom. The authors from the cardiology department of the university of Ryazan, Russia, explain the positive effects by the positive hormone-like effects and by the improved nutritional and functional supply of the myocard.

Lyusov and Meshteryakov (1994) compared the effect of RJ with other anti-stenocardia agents. 300 mg RJ per day was given to all patients with ischemic heart disease (first group) and stenocardia (second group). As whole 76 % of the RJ treated patients had an improvement of the symptoms, best results with 86% success rate was in the group with stenocardia of the second functional class.

Myacard-infarct, hypertonia

According to Krylov and Sokolsky and Krylov et al.^{142, 143}:

Lupachev (1965) used 3 to 6 pills of Apilac per day to treat 80 persons more than 40 year old myocardial infarct patients, some of them with hypertension. Contrary to the action of nitroglycerine the heart pain was not extinguished, but its duration and intensity decreased. The author presumes an anti-spasmolytic action , increase of coronary blood flow and the positive neuro-vegetative effects of RJ to be the cause of the RJ action. The blood tension normalized and the blood parameters improved¹⁶⁵.

Fomina et al. (1998) report on a positive effect of RJ in the treatment of hypotony. 60 patients with blood pressures of 100/60 or less all improved their readings to values of 110/70 to 120/75.

*According to Asafova et al.*⁹:

Margavichene et al. 1988 tested the use of RJ (Apilac, 0.07 g RJ) against ischemic heart disease (including angina pectoris) in 25 men, decrease of cholesterol was achieved only after 5 months.

Ohotskyi and Kovrigo (1984) tested RJ (1-2 tablets of Apilac) in 2141 patients, 412 p. with coronary sclerosis 243 p with stenocardia, 49 p. after myocardial infarct, 384 p. with vegetative vascular dystonia and 384 p. with hypertension climacterium syndrome (men and women). The conclusion of the authors: the general conditions of patients with athero- and coronary cardiac sclerosis with tendency towards vascular spasms improved, stenocardia attacks disappeared, the blood circulation in the limbs improved.

Ogorkov and Fomina (1994) used 10 g honey-royal jelly (2%) for 25 days to treat 20 women with vegetative myocardial dystrophy of women in climacterium. Results: improvement of general condition, blood pressure stabilized.

OTHER DISEASES

Respiration diseases

According to Shkenderov and Ivanov²⁴⁴:

Vitek and Janci (1968) have reviewed 10 publications on the use of RJ against bronchial asthma: RJ was used sublingually in doses of 50 to 500 mg per day. Out of 311 patients 75 % showed improvement and the symptoms stopped for a longer time.

Matushevski et al. (1972) treated patients with bronchial asthma with 3 times a day 100-150 mg dry RJ sublingually, for one month. The condition of the patients improved, the eosinophil cell values were back to normal.

Petrov (1971) treated successfully 170 children with spastic bronchitis by aerosol inhalations with honey and RJ.

Diabetes

In 1956 a work on the antidiabetic effect of RJ was published, but neither the exact effect nor the diabetes type is known²³¹

Diabetes 2

RJ contains substances with anti-diabetes activity like 10 HDA and other fatty acids²⁰³ and improves insulin resistance in fructose drinking rats³⁰⁶

In a 2014 first Iranian study the effect of a daily dose of 1 g RJ for 8 weeks on diabetic women was studied (20 test, 20 controls). RJ supplementation, decreased insignificantly mean fasting blood glucose (163.05±42.51 mg/dL vs. 149.68±42.7 mg/dL) while fasting serum insulin was increased significantly²²³.

In a follow up 2015 a randomized clinical trial, 40 patients with type 2 diabetes were assigned into the RJ (n = 20) and placebo (n = 20) groups and received either 10 g fresh RJ or placebo after overnight fasting Iranian study, blood sampling was carried out 1 and 2 hours after RJ ingestion. There was no immediate RJ effect on plasma glucose, while the C-peptide concentration increased significantly¹⁸³.

In another Iranian study it was shown that RJ intake may have favourable effects on serum total antioxidant capacity and on the homeostasis model assessment for insulin resistance in diabetes type 2 patients²⁴²

Fifty patients with type 2 diabetes participated in a double-blind, placebo-controlled study. The participants were randomly divided into RJ and placebo groups and were given doses of 1000 mg royal jelly or placebo 3 times a day for 8 weeks, respectively. Weight, height, fasting blood glucose, ApoA-I and ApoB were measured at baseline and endpoint. There were no significant differences in baseline characteristics and dietary intakes between groups. The mean difference in glucose concentrations decreased in the RJ group (9.4 mg/dL vs. 4 mg/dL; p=0.011). The mean difference in ApoA-I concentrations increased in the RJ group (34.4 mg/dL vs. 1.08?mg/dL; p=0.013). There was a significant decrease in mean difference of ApoB/ApoA-I in the RJ group compared with the placebo group (0.008 vs. 0.13; p<0.044), respectively¹²⁵.

Muenstedt et al. (2009) confirmed the RJ antidiabetic effects: twenty healthy volunteers underwent the standardized oral glucose tolerance test (OGTT) and afterwards a second OGTT after ingestion of 20 g of native royal jelly. Serum glucose levels after 2 hours and the area under the curve for glucose were significantly lower (P = .041) after royal jelly administration. Substances originating from the pharyngeal glands of the honey bee with insulin-like activity are likely to have caused this effect and may thus be, at least partially, responsible for the lowering impact of honey on blood glucose levels¹⁸⁹

In another study 6 month ingestion of 3 g RJ daily lead to a significant decrease of fasting glucose vs control¹⁸⁵

Diabetes 1

A daily dose of 200 mg freeze dried RJ for 3 months by diabetes 1 patients failed to influence the glucose levels¹⁰⁵

Cancer

The anti-tumor effect being tested in children with acute leukaemia, lymphoma and hepatoblastoma. Ingestion of 1 gr fresh RJ daily showed some positive results: gain of weight and improvement of the general condition of the children, together with increase of white blood cells, neutrophils and leukocytes. The authors conclude that although RJ can influence positively cancer growth, it is not a drug and patients should not rely on RJ only for treatment of cancers¹¹⁷

In another test RJ stimulated the immunoglobulin production by human lymphocytes and increased the anti-cancer factors IgM and IgG in lymphocytes of patients with breast cancer²⁹⁸.

A Russian study by Oveckin in 2004 reported on the successful palliative use of the preparation Apitonus (3 times a 100 mg RJ dose), alone or in combination with chemotherapy and radiation in patients with malignant duodenal ulcers, kidney and glandular cancers. RJ improved the life quality of the patients: their appetite improved and the pains decreased, reported in¹⁴²

Autoimmune diseases

The immunomodulatory effects of fresh royal jelly (RJ) administration on systemic lupus erythematosus (SLE) in humans was studied by fresh RJ administration on the disease course in children with SLE with some immunological markers (CD4⁺ and CD8⁺ regulatory T cells and T lymphocytes apoptosis). In an open-label study in which 20 SLE children received 2 g of freshly prepared RJ daily, for 12 weeks. The percentages of CD4⁺ CD25^{high} FOXP3⁺ cells (CD4⁺ regulatory T cells) and CD8⁺ CD25^{high} FOXP3⁺ cells (CD8⁺ regulatory T cells) were significantly increased after RJ treatment when compared with baseline values. Apoptotic CD4 T lymphocytes were significantly decreased after RJ therapy when compared with baseline values and the control group. This is the first human study on the effect of RJ supplementation in children with SLE. Our results showed improvements with 3-month RJ treatment with regard to the clinical severity score and laboratory markers for the disease. At this stage, it is a single study with a small number of patients, and a great deal of additional wide-scale randomized controlled studies are needed to critically validate the efficacy of RJ in SLE³⁰⁵

Gastroenterology

According to Krylov and Sokolsky and Krylov et al.^{142, 143}:

Georgieva and Vasilev (1972)

Mishtenko (1974) treated patients with gastric and duodenal ulcers and gastritis by 20-25 mg dry RJ 3 times per day for one month, patients being on a diet, a 1. control group on diet only 2. group with a diet and RJ 3. traditional medication and RJ. In group 1 (diet only) 41 % (40 patients) improved, 66 % of the group 2 patients (n=40) improved while in group three 88 % (130 patients) improved, cited by¹⁴³.

Eye Diseases

According to Krylov and Sokolsky and Krylov et al.^{142, 143}:

Royal jelly was successfully used in eye retina diseases with disturbed blood circulation, against inflammation of the eye cornea, after thermal burn of the eye, used in combination with methylcellulose gel.

The experience in Ludyanski's hospital:

The table below summarises the different medical uses of RJ while in table the results of treatments with RJ against different diseases in Ludyanski's hospital¹⁶⁴

Table 6: Uses of royal jelly in a Russian hospital

Treated disease	Cases Very good and good improvement	Cases with no improvement
Arteriosclerosis	27	6
Cerebral insufficiency	46	12
Climacterium	39	5
Hypertonia	21	8
Hypotony	16	5
Pediatric diseases	12	3
Poor blood circulation	35	11
Sexual dysfunction (men)	26	5

External Applications

Wounds and cosmetics

RJ has wound healing properties. Its major protein activates keratinocytes, involved in wound healing¹⁶⁹. It inhibits the production of proinflammatory cytokines, thought to play a role in skin inflammation¹³⁴, promotes the wound healing in diabetic mice¹²⁶ and heals foot ulcers of diabetic patients²⁴⁵. The healing effects of foot ulcers of diabetic patients could not be confirmed in another study²⁴⁶

The antimicrobial properties, together with the proteins and fatty acids makes it appropriate for skin applications. In cosmetic preparations RJ prevents spots and wrinkles and moisturises the skin²⁶⁶. A RJ extract increases the natural moisturizing factor (NMF) by promoting the expression of profilaggrin in the skin, as well as by having a moisturizing effect on the stratum corneum²⁰⁴. RJ reduces melanine synthesis and is a good candidate for skin-whitening in cosmetics⁸⁵

To determine whether dietary supplementation of RJ may improve epidermal level of hydration and total ceramides (Cer), a major lipid maintaining epidermal barrier for dry skin protection, mid- aged 47 subjects (mean age 41.3 ± 6.2), who have dry skin, were randomly assigned into three groups: groups RJ1 (n = 17) and RJ2 (n = 16) received capsules contained 520 mg/day of either freeze-dried RJ (RJ1) or RJ2 which was pretreated with proteolytic enzymes, thereby the removal of allergy induced protein in RJ. The dietary royal jelly improved epidermal hydration after 10 weeks, more after RJ2 than RJ1⁴⁰

According to Krylov et al. ¹⁴² :

Somov and Abramova (1962) used a 5 % RJ aerosol, 2-3 times a day, against seborrhoea and other eczema-like skin inflammations. Many skin creams and lotions contain RJ. Malay et al. (1965) have used of GR against: warts (cream containing 1 % RJ). Smirnova (1960) has used 0.6 % RJ emulsion to counteract face dryness, to improve elasticity of the skin and to diminish pigmentation, to diminish fatty seborrhoea, to clean the oil glands. Omarov (1990) uses creams with RJ to tonify the face skin, to moisture its dry skin and to make it fresher.

Ophthalmology

According to Krylov et al. ¹⁴² :

RJ has been applied also: in ophthalmology: Maximenko (1975) has used a RJ preparation for the treatment of retina diseases connected with the disturbance of the eye microcirculation.

Nedelka et al. (1987-1990) used RJ, 1 % in methylcellulose glycerol successfully against traumatic keratitis and lesions of the conjunctiva and the cornea. Nedelka et al. developed different preparations: drops, creams and soluble films. These results were confirmed by Takrovski (1974) and Tanev and Peitshev (1974).

TOXICITY, COUNTER-INDICATIONS AND PRECAUTIONS

Chronic toxicity

Krylov et al. ¹⁴² describes experiments of Vassiliva (1962) and Lupachev (1962, 1976) with animals: doses from 1 to 10 mg/kg per day cause a progressive weight increase stimulation, in a dose of 100 mg/kg the weight increase begins to become smaller and at doses of 1000 mg/kg there is a weight decrease in comparison to controls. The toxic effect at higher dose is abnormal morphology of the brain tissue of the animals. Spiridonov et al. found no cytotoxic effects for RJ on rat lymphoblast cells²⁵².

An injection of 1ml RJ per mice (about 50 g/kg) seem to be toxic, while a dose of 5 g/kg was not toxic and induced an increase of the weight of the lymphatic tissue⁷⁶.

The chronic toxicity of RJ upon ingestion should be further studied, while it seems that RJ ingestion might be toxic in relatively low doses

A good therapeutic index means that the safety factor between the therapeutical and the toxic dose is at least 500 (for most synthetic drugs the TD lies between 3 and 100). In humans a safe dose with a therapeutic index of 500 corresponds to 2 mg RJ per kg, and a therapeutic index for a 75 kg individual this being 150 mg RJ per day. Increasing of this dose to 750 mg per day, RJ will still have an acceptable therapeutical index of 100.

Allergy

During the last 10 years there are several publications, reporting cases of allergy following the applications of RJ. Asthma and anaphylaxis have been reported in rare cases^{48, 75, 214-216, 268}, as well as one case of skin contact dermatitis²⁶¹. These reports are mostly from East Asia, where RJ is consumed more often, while allergy cases in Europe are much less frequently reported. According to an epidemiological study in Hong Kong with 1471 normal persons the allergy prevalence is 6.1 per 1000¹⁵⁶. Patients with a risk of RJ allergy have often an allergy towards bee venom and are atopic (show immediate allergy reactions)¹⁵⁷. On the other hand, an epidemiological study in Russia with 640 no cases of RJ were encountered²⁵¹.

RJ should be used as a food-ingredient or medicine only after an allergy test. In persons with a history of allergies or with asthma, taking royal jelly has caused bronchial spasms, acute asthma and anaphylactic shock. It is therefore imperative that anyone who is considering supplementing with royal jelly consults with a physician before its use, especially those who are allergic to bee stings, honey, or who have asthma. People with bee venom allergy, asthma and with a high incidence of allergy should avoid RJ intake. A special caution should be noted for pregnant and/or lactating women as well as for pregnant and/or lactating women as well as for small children.

The major royal jelly proteins 8 and 9 are glycosylated components of Apis mellifera venom with allergenic potential beyond carbohydrate-based reactivity. They have IgE-sensitizing potential in BV-allergic patients beyond are allergens, which might be potentially important for a fraction of venom allergic patients¹⁸

The hypoallergenicity of alkaline protease-treated RJ in vitro and in vivo was tested: the treated RJ contained the same levels of vitamins, minerals and specific fatty acid as in untreated RJ. Also the IgE-binding capacity of the treated RJ was very significantly reduced by conducting in vitro assays of the blood from RI-sensitive patients. An in vivo skin-prick test on the RJ-sensitive patients also showed that, in the majority of the patients (3 out of 4 tested), the treated RJ did not evoke any allergenic response. It is thus advantageous to prepare hypoallergenic RJ by a protease enzyme treatment for its safe consumption¹⁸⁶

HEALTH CLAIMS FOR ROYAL JELLY

According to the EU Regulation 1924/2006⁵⁴ different health claims can be made.

1. Diet-related cardiovascular disease

Long term ingestion of royal jelly can improve cardiovascular health, concerning the drop of the blood cardiovascular disease risk factors blood lipids and cholesterol

2. Physical performance and fitness

Intake of royal jelly can improve the performance and fitness, especially of elderly people (anti-aging)

3. Diet-related cancer

Intake of royal jelly can reduce the risk for cancer

4. Mental state and performance

Intake of royal jelly can improve the mental state and physical performance. These effects are especially significant in older people (anti-aging effect).

PRODUCT STORAGE, APPLICATION FORMS AND INTAKE

Storage and shelf life of the product

Freshness has been attributed a great importance for RJ quality. Royal jelly can be spoiled easily if not properly stored. Immediately after harvest it should be placed in dark vessel and stored 0 - 5°C. Stored under these

conditions its quality remains OK for half an year. Deterioration of royal jelly can be prevented by storing RJ in Argon after harvesting¹¹⁴. After longer storage it will turn rancid. Frozen royal jelly can be lyophilised as it can be transported more easily in the dry state. If frozen, it can be stored for 2-3 years without losing of its quality. Chauvin states that the physical properties of RJ change after 20 hours after harvest, if left at ambient temperature³⁸. That means that RJ should be stored in the cold immediately after harvest. According to Chauvin RJ the biological properties of RJ in what regards its capability to induce hyperglycaemia, remain intact only for 1 month, if stored at about 4°C. On the other hand Krylov tested whole RJ, stored for one year at 5 °C and found out that its antimyocard activity, measure was not different, in comparison to fresh RJ¹⁴³. Recently it was also shown that only storage of RJ in frozen state prevents decomposition of biologically active RJ proteins¹⁶⁰.

On the other hand, storage experiments of fresh RJ and FTIR measurements of protein degradation showed that after 21 months of storage at -20°C the protein begins to decompose. When RJ is stored at 4 °C RJ should be stored for a maximum of 7 weeks²⁶⁴

Experiments have shown that the enzyme glucose oxidase enzyme contained in RJ is influenced both by storage temperature and time^{12, 30}. At 4°C there was small reduction of enzyme activity, while at 20°C it decreases significantly after one month and degrades completely after one year³⁰. At 37 and 50°C this decrease is faster¹³. The determination of glucose oxidase is analytically very simple and thus within the capabilities of all laboratories. This method could be used to evaluate the product's freshness; however, further investigation must first be conducted into the natural variability of this component in the fresh product.

Recently it was proposed that furosine content can be used as a marker for RJ freshness¹⁷⁴. The initial content of this compound is very low in fresh royal jelly. Specifically, the content rose to as high as 500 mg/100g of protein after 18 months' storage at room temperature and 50 mg/100g at 4°C. Samples taken from store shelves showed values ranging from 40 to 100 mg/100g protein. The value of furosine, a product of Maillard's reaction, proved very low (from 0 to 10 mg/100g of protein) in freshly produced RJ samples but increases over time and in relation to temperature. A limit of 50 mg furosine / 100g protein could be used for fresh RJ. A specific RJ protein, decomposing upon storage can also be used as a freshness marker¹¹⁹. A cheap and fast method based on a chromogenic reaction of RJ and HCl has been proposed³⁰⁸.

Improvement of storability

From the above findings it is clear that RJ is an unstable product. Freeze drying is the most important technological method in order to improve the storability of RJ. However, there is a loss of volatile substances, as reported by Vahonina, 1995 in³³. Stabilisation can be achieved by mixing 1 to 2 % of RJ into honey, where all enzymatic activity is stopped.

As reported in³³ the Russian Braines found out in 1968, that RJ can be bound to a mixture of lactose and glucose, which improves its durability. In Russia RJ is often offered in such lactose-glucose pills under the name of Apilac. The method of Braines was improved as follows: Six part of frozen RJ are added to one part of dried glucose-lactose (1:1), then the mixture containing 50 mg/kg L-ascorbic acid as an antioxidant is dried until 4 % humidity. This product is stable at 4 to 8 °C for 2 years^{32, 33}.

Shelf life

Fresh royal jelly:

- 6 months, if stored in the refrigerator (3 to 5 °C)
- 2 years if stored in the freezer (< - 18 °C)

Lyophilised royal jelly

- One year if stored in the refrigerator (3 to 5 °C)
- At least 2 years if stored in the freezer (< - 18 °C)

Fresh or lyophilised royal jelly in honey

- Two years at room temperature, if honey-RJ total humidity is less than 18 %.

Application forms

Royal jelly is used in different forms: as raw royal jelly (alone or in combination with honey and other bee products, as alcohol extracts in ampules), in lyophilised form or as pills. Most of the natural RJ is stored in frozen state before selling. It is packed often in small, closed, dark coloured bottles, containing 10, 15 or 20 g. Spoilage

due to sun light and oxidation is thus prevented. Royal jelly is consumed together with honey or as pills. RJ can be ingested sublingually or directly ingested. Injections are no longer used because of allergy problems.

The daily ingestions dose for adults used in the different studies varies between 10 and 500 mg of fresh royal jelly per day, most human studies are carried out with doses of 20 to 200 mg daily

For apitherapy higher doses are recommended: children 20-100 mg/day; adults: 200-500 mg/day

All apitherapy applications of royal jelly should be carried only after consulting a doctor and testing for an eventual allergy People with bee venom allergy, asthma or with a high incidence of allergy should avoid RJ intake. A special caution should be noted for pregnant and/or lactating women as well as for pregnant and/or lactating women as well as for small children.

Royal jelly in honey

For mixing fresh RJ consider honey with a low humidity, lower than 16 % water, in order to prevent spoilage by fermentation. If freeze-dried RJ is added to honey to achieve a higher RJ concentration, crystallised honey with low water content should be used, in order to prevent rising of RJ to the surface. The RJ honey should be stored at lower temperature. One table spoon of about 20 g 1 % RJ in honey of it will contain 200 mg fresh RJ, which equals the recommended dosage per day. It has been reported that HDA content of RJ-honey products decreases upon storage⁵⁵. Thus these products should be stored also at cool temperatures or frozen for optimum activity. In Asia RJ is often an ingredient of beverages.

Higher doses can be achieved by mixing directly freeze dried RJ in honey. Until 5 % of FDRJ in honey can be achieved with an acceptable sour taste of the mixture: Following mixture was developed by Bee Product Science:

- 1 kg fine crystallised honey is brought to about 40⁰ C
- grind organic propolis to fine powder mix 10 g thereof to the honey
- mix 50 g of lyophilised organic RJ
- stir mixture until an even consistency is reached
- transfer to a room of about 10⁰ C to reach a firm stable consistency
- consume portions of the product at 20⁰ C. 1-2 tea spoons daily.

Royal jelly bound in lactose-glucose pills

According to Burimistrova, the storability of fresh RJ can be improved, similarly to the one of FDB by binding RJ to a glucose-lactose adsorbent according to the following manner: 6 parts of FRJ are added to one part of dried glucose-lactose (1:1), the mixture containing 50 mg/kg L-ascorbic acid as an antioxidant, the mixture is dried until 4 % humidity. This product is stable at 4 to 8⁰C for 2 years^{32,33}.



Fresh frozen royal jelly



Royal jelly in honey
(1-2%)



Royal jelly pills



Royal jelly ampoules



The Russian preparation Apilac, where RJ is bound to glucose-lactose mixture for better durability and stability



Freeze dried royal jelly is a stable form of royal jelly

Cosmetics

RJ is often used as an ingredient of cosmetics or for skin application for treatment of burns and other wounds. It is usually included in small dosages (up to 1 %) but it deteriorates quickly. The freeze-dried form should be used because it is easier to handle and is more stable.

Facelifting cream with RJ (found in www.royalbeejelly.net):

- 80 grams of blended oil; 45 grams of cocoa butter; 15 grams of beeswax; 1,5 dcl of water; 10 grams of fresh royal jelly
- Melt the oils and wax at low heat, stir for 12 minutes, remove the melted liquid from the stove and add water, mix with a mixer (handy one) until it gets creamy like – smooth, pour into a glass, cover and store on a dark place. See recipes for other RJ cosmetic products in [Krell](#)¹³⁷



Cleopatra bath with royal jelly



Night cream with royal jelly



Royal jelly soap



Royal jelly body lotion and moisturizing cream



Different cosmetic products



Royal jelly mask

BEE BROOD FOR NUTRITION AND HEALTH

Composition and nutritional requirements

The composition of fresh bee larvae has been studied only by Finke⁵⁹, while the composition of powdered bee larvae is studied by Narumi¹⁹⁷. There is quite a good agreement for the bee larvae composition between these two studies excepting for biotin content. Bee larvae could be used in bigger quantities as a part of the food diet, especially as a protein source, especially rich in essential amino acids (tables 7 and 8). The fatty acids are mostly saturated (52 %), monoansaturated acids being 46 % and poly-unsaturated acids only 2 % three primary fatty acids are oleic, palmitic and stearic acids. Indeed, the greater part of the protein is composed of amino acids. Of all amino acids only sulphur amino acids methionine and cysteine are lacking. If consumed in a quantity of 50 to 100 g daily, it can be a good source of vitamine C, choline, inositol, and most of the B vitamins, while it contains no detectable levels of fat-soluble vitamins. It is also a good source of minerals, from all trace elements the content of Selenium being most noteworthy.

Budnikova (2009) found that fresh drone brood contains 2.73 % 10-HDA 8 nMoles/l testosterone and 2745 nMoles/l estradiol³¹.

Table 7: Composition of bee brood compare to that of beef and soybean, after¹³⁷

Component	larvae	pupae	beef	soybean
Water	77	70.2	74.1	70.0
Protein	15.4	18.2	17.7	12.9
Fat	3.7	2.4	2.8	5.9
Glycogen*	0.4	0.8	0.1-0.7	2.4

*- glycogen (a carbohydrate polymer) was determined instead of sugar, contained as 9 % of total, which originates from honey rests.

Besides a possibility to be used as food for its protein content, it could also have similar effects as RJ. However, there are very few published works. Italian psychiatrists observed improvements in respect to the appetite, body weight, hepatic activity, digestion and haemopoietic functions of 15 female psychiatric patients who were suffering from loss of weight and appetite¹⁸⁴.

Drone brood, after addition of a little propolis, was desiccated under vacuum until 99 % dry matter concentration. The product kept the original biological properties, measured by its immunomodulating, spleen and T-cell stimulating properties²²⁴.

Table 8: **Main components of fresh^{33, 59} and powdered bee brood¹⁹⁷**

Component	Fresh g/100 g	Powdered g/100 g	RDI g
Water	76.8	4.5	
<i>Proteins total</i>	9.4	52.3	48-56
(Amino acids)	7.9	57.7	
<i>Lipids</i>	4.7	21.9	
Fatty acids	4.0		
10-HDA	3.3		
<i>Carbohydrates</i>	8	17.8	300-340
Fiber content	0.5		
Ash content	0.8	3.5	

Table 9: **Secondary components of fresh^{33, 59} and powdered bee brood¹⁹⁷**

Component	Fresh	Powdered	RDI
Vitamins	mg/kg	mg/kg	mg
Vitamin A (IU/kg)	< 1000		
β-Carotene	< 0.2		
Vitamine E (IU/kg)	< 5		
Vitamine C	38		
Vitamine B ₁ Thiamine	4.1	16.9	1.4
B ₂ ; Riboflavin	9.1	31.2	1.6
B ₃ ; Niacin	36.7		18
Folic acid		0.93	0.4
B ₅ ; Pantothenic acid	11.9	51.5	6
B ₆ ; Pyridoxin	1.2	1.8	2
B ₁₂ ; Cobalamine	< 1.2	0.31	6 μg
H; Biotin (μg/kg)	0.23	776	30 μg
Choline (g/kg)	1.68	6.9	0.5
Inositol (g/kg)		10.5	30 mg
Minerals	mg/kg	mg/kg	
Sodium	128	423	2400
Potassium	2690	10400	3500
Magnesium	211	816	350
Calcium	138	446	1000
Phosphorus	1790	8040	1000
Iron	16	63.2	15
Manganese	0.6	3.3	5
Copper	4	16.9	2
Selenium	0.06	0.12	35 μg

Table 10: Hormones in fresh royal jelly and fresh drone brood³³

	Fresh royal jelly	Fresh drone brood
	nmoles /100 g	nmoles /100 g
Testosterone	0.20 ± 0.03	0.31 ± 0.015
Progesterone	4.61 ± 0.26	51.32 ± 8.69
Prolactine	70.8 ± 20,0	410.0 ± 65,4
Estradiol	52.0 ± 6,0	677.6 ± 170,3

Besides these hormones Burismistrova reports on Chinese studies by Li et al. (1982) and Pan Jian-Guo (1995) that DB contains also the typical bee hormones prothoracicotropic hormone (PTTH), juvenile hormone and ecdyson.

Osintzeva et al. (2009) tested a drone brood (DB) homogenate by feeding 15 mg per kg to 2 years old dogs 20 min. before the regular feeding. The dogs ate voluntarily the DB. Blood was tested before and 30 days after intake. : Thyroxin and Tri-iodothyronine concentrations increased by 40 %, while thyreotropic hormone (Th) concentration decreased by 37 %, increase was measured in total blood proteins increased by 12 %, triglycerides by 99 %, high density lipoproteins by 12 % and low density lipoproteins by 94 %. The weight increase was 92 % higher than that of the controls²⁰⁷.

Bee brood for human consumption after [Krell](#)¹³⁷

Gather larvae by cutting them out from the combs. Refrigerate or freeze or eat immediately. If larvae are refrigerated immediately, freezing, drying, boiling or frying should be completed less than 24 hours after collection of larvae to avoid any spoilage since insect proteins decay much faster than those of beef, chicken, lamb or pork. Where no refrigeration is available, processing will have to be started immediately after collection. If there is no freezer or refrigerator, the boiled larvae should be consumed within a day. Fried larvae will keep a little longer.

See more information on bee brood in [Krell](#)¹³⁷

Bee brood in lactose-glucose pills

According to Burimistrova, the storability of fresh bee brood can be improved, by binding fresh BB to a glucose-lactose adsorbent according to the following manner: 6 parts of BB are added to one part of dried glucose-lactose (1:1), the mixture containing 50 mg/kg L-ascorbic acid as an antixodant, the mixture is dried until 4 % humidity. This product is stable at 4 to 8 °C for 2 years³³.



Eating bee brood, from [Krell](#)¹³⁷



Apilarnil – a DB product from Romania



Drone brood lactose-glucose tablets

Biological action

Burimistrova carried a series of biological experiments. DB shows antibacterial activity, but it is weaker than that of RJ. Mice were fed with: normal feeding without additives (control), with and 10 and 20 mg/kg DB or RJ and were subjected to daily swimming. The animal size of the DB fed mice and the swimming capabilities were less

pronounced than after the feeding of the same quantities of RJ, but bigger than the controls. The author concludes that DB has a less pronounced activating and autoprotective activity than RJ, but these activities are more pronounced than the control non treated animals. On the other DB has a more pronounced gonadotropic activity than RJ, allowing the rehabilitation of blood concentration of testosterone and fructose³³.

DB caused androgenic effects in mail broilers³⁰⁴. In castrated male rats it has a androgenic activity while in female rats it has an estrogenic effect²³⁶

It also reduces fear and advances sexual development in male broilers but has no effect on growth⁶

Belyaev and Sofonkaya (2009) tested a liquid drone brood by feeding rabbits by intraoral intake of 0.6 ml/kg every 48 hours (controls treated with gelatine). The thiobarbituric reactive substances (a mass for lipid peroxidation and oxidative stress) decreased by 26 %, while that of the controls increased by 25 %, serum sialic acid concentration (a mass of the cardiovascular mortality risk) decreased in the treated groups decreased by 20 % while the controls it increased by 24 %. The experiments showed a decrease of oxidated reaction products in blood and increase of the cell resistance of the DB treated rabbits. In a second series of experience the endurance of the animals under stress condition was tested by giving 0.015 ml per mouse (controls fed with gelatine) and testing the animals for active swimming after 10 days intake. The endurance of the controls increased by 9 %, that of the DB treated group by 35 % in comparison with the beginning of the test¹⁴.

Apitherapy

In Romania a drone brood preparation Apilarnil based on drone brood has been developed and used. It is based on freeze dried drone brood. A Romanian book by N. Iliesu: “Apilarnil – health, power and long life” was published in 1990. Apilarnil is used as a biostimulator for similar conditions as royal jelly: for rehabilitation and activation of the aged people, against neuro-vegetative and sexual problems.

In the Russian book “Theory and agents in apitherapy”, written by a group of Russian scientists, applications against chronic gastric ulcers and liver insufficiency are mentioned, mainly Apilarnil use in Romania. Also Romanian studies of the use of Apilarnil are cited: Ardelianu et al. 1983, reporting on successful use in elderly people with psycho-neurotic sympoms and climacterium related symptoms¹⁴².

Allergy

In a study in Russia the incidence of allergy towards DB application was 2.4 % (n=41)²⁵¹

References

1. ABD-ALLA, M S; MISHREF, A; GHAZI, I M (1995) Antimicrobial potency of royal jelly collected from queen cells at different larvae ages. *Annals of Agricultural Science* 40 (2): 597-608.
2. ABDELHAFIZ, A T; ABDELMONAEM, J; ABDLERAHMAN, M; OMAR, A; ALY, D (2010) An in-vitro model for the use of Egyptian bee honey and royal jelly in cases of premature rupture of the fetal membranes (PROM), *2nd International Conference on the Medicinal Use of Honey*, IBRA, Kota Bharu, Malaysia, 13.Jan.2010: pp 33.
3. ABDELHAFIZ, A T; MUHAMAD, J A (2008) Midcycle pericoital intravaginal bee honey and royal jelly for male factor infertility. *International Journal of Gynecology & Obstetrics* 101 (2): 146-149.
4. AL-MASRI, A (2011) The royal jelly. Honeybee kingdom and its derivaton, *In Bartolome, J A A L F M P* (ed.) Arabic Book House Publishers; pp pp.291-300.
5. AL-MUFARREJ, S I; EL-SARAG, M S A (1997) Effects of royal jelly on the humoral antibody response and blood chemistry of chickens. *Journal of Applied Animal Research* 12 (1): 41-47.

6. ALTAN O; YÜCEL B; AÇIKGÖZ Z; SEREMET C; KÖSOĞLU M; TURGAN N; OZGÖNÜL AM. (2013) Apilarnil reduces fear and advances sexual development in male broilers but has no effect on growth. *Br Poult Sci* 54: 355-361.
7. ARDRY, R (1956) Royal jelly. I. Physico-chemical and immunological properties. *Annales pharmaceutiques francaises* 14 (2): 97-102.
8. ARZI, A; OLAPOUR, S; YAGHOOTI, H; KARAMPOUR, N (2015) Effect of Royal Jelly on Formalin Induced-Inflammation in Rat Hind Paw. *Jundishapur J Nat Pharm Prod* 10(1): e22466
9. ASAFOVA, N; ORLOV, B; KOZIN, R (2001) *Physiologically active bee products (in Russian)*. Y.A.Nikolaev Nijnij Novgorod; 360 pp
10. ASLAN, A; CEMEK, M; BUYUKOKUROGLU, M E; ALTUNBAS, K; BAS, O; YURUMEZ, Y (2012) Royal jelly can diminish secondary neuronal damage after experimental spinal cord injury in rabbits. *Food and Chemical Toxicology* 50 (7): 2554-2559.
11. BACHANOVA, K; KLAUDINY, J; KOPERNICKY, J; SIMUTH, J (2002) Identification of honeybee peptide active against *Paenibacillus* larvae larvae through bacterial growth-inhibition assay on polyacrylamide gel. *Apidologie* 33 (3): 259-269.
12. BAGGIO, A; DAINESE, N (1998) La qualita della gelatina reale nella conservazione. *Industrie Alimentari* 37 (375): 1290-1294.
13. BAGGIO, A; DAINESE, N (1998) Royal jelly quality during storage. *Industrie Alimentari* 37 (375): 1290.
14. BELYAEV, V; SOFONKSAYA, E (2009) Adaptogen properties of drone brood. *Pcelovodstvo* (6)
15. BILIKOVA, K; HANES, J; NORDHOFF, E; SAENGER, W; KLAUDINY, J; SIMUTH, J (2002) Apisimin, a new serine-valine-rich peptide from honeybee (*Apis mellifera* L.) royal jelly: purification and molecular characterization. *Febs Letters* 528 (1-3): 125-129.
16. BILIKOVA, K; WU, G S; SIMUTH, J (2001) Isolation of a peptide fraction from honeybee royal jelly as a potential antifoulbrood factor. *Apidologie* 32 (3): 275-283.
17. BINCOLETTO, C; EBERLIN, S; FIGUEIREDO, C A V; LUENGO, M B; QUEIROZ, M L S (2005) Effects produced by Royal Jelly on haematopoiesis: relation with host resistance against Ehrlich ascites tumour challenge. *International immunopharmacology* 5 (4): 679-688.
18. BLANK, S; BANTLEON, F, I; MCINTYRE, M; OLLERT, M; SPILLNER, E (2012) The major royal jelly proteins 8 and 9 (Api m 11) are glycosylated components of *Apis mellifera* venom with allergenic potential beyond carbohydrate-based reactivity. *Clinical and Experimental Allergy* 42 (6): 976-985.
19. BLUM, M S; NOVAK, A F; TABER, S (1959) 10-hydroxy-2-decenoic acid, an antibiotic found in royal jelly. *Science* 130: 452-453.
20. BONOMI, A (2001) La gelatina reale nell'alimentazione dei suini in fase di svezzamento. *Rivista di Suinicoltura* 42 (4): 183-188.
21. BONOMI, A (2001) Royal jelly in the feeding of weaning pigs 1850. *Rivista di Suinicoltura* 42 (4): 183-188.
22. BONOMI, A; BONOMI, B M (2000) La gelatina reale nell'alimentazione delle anatre da carne. *Rivista di Scienza dell'Alimentazione* 29 (4): 465-476.
23. BONOMI, A; BONOMI, B M (2000) Royal jelly in duck feeding 1848. *Rivista di Scienza dell'Alimentazione* 29 (4): 465-476.
24. BONOMI, A; BONOMI, B M (2002) La gelatina reale nell'alimentazione dei vitelli in fase de svezzamento. *Apitalia* 29 (9-10;11-12): 45-50.

25. BONOMI, A; BONOMI, B M (2002) Royal jelly in the feeding of calves at the weaning stage 1955. *Apitalia* 29 (9-10;11-12): 45-50.
26. BONOMI, A; BONOMI, B M; QUARANTELLI, A (2000) La gelatina reale nell'alimentazione del coniglio da carne. *Annali della Facoltà di Medicina Veterinaria di Parma* 20: 115-132.
27. BONOMI, A; BONOMI, B M; QUARANTELLI, A (2000) Royal jelly in the feeding of rabbits 1849. *Annali della Facoltà di Medicina Veterinaria di Parma* 20: 115-132.
28. BONOMI, A; BONOMI, B M; QUARANTELLI, A (2001) La gelatina reale nell'alimentazione del tacchino da carne; La gelatina reale nell'alimentazione del faraone da carne. *Rivista di Scienza dell'Alimentazione* 30 (1): 49-60.
29. BONOMI, A; BONOMI, B M; QUARANTELLI, A (2001) Royal jelly in turkey feeding; Royal jelly in guinea-fowl feeding 1851. *Rivista di Scienza dell'Alimentazione* 30 (1): 49-60.
30. BOSELLI, E; CABONI, M F; LERCKER, G; MARCAZZAN, L P; SABATINI, A G; BAGGIO, A; PRANDIN, L (2002) Valutazione di produzioni apistiche: gelatina reale e cera, In Sabatini, A G; Bolchi Serrini, G; Frilli, F; Porrini, C (eds) *Il ruolo della ricerca in apicoltura*, Litosei; Bologna; pp 321-329.
31. BUDNIKOVA, N (2009) Biologically active compounds in drone brood (in Russian). *Pcelovodstvo* (6)
32. BURIMISTROVA, L; AGAFONOV, A; BUDNIKOVA, N; HARITONOVA, M (2008) Methods for the stabilisation of biologically active components royal jelly (Russian), *Apitherapy today*, Ribnoe, 13.Oct.2008: pp 175-182.
33. BURIMISTROVA, L (1999) Physico-chemical and biological appreciation of drone brood. PhD Ryazan Medical University, Russia; 159pp.
34. CHAUVIN, R (1956) [Principle of royal jelly bees, active on mammalian blood sugar]. *Comptes rendus des Séances de l'Academie des Sciences* 243 (23): 1920-1921.
35. CHAUVIN, R (1956) [Principle of royal jelly bees, active on mammalian blood sugar]. *Comptes rendus des Séances de l'Academie des Sciences* 243 (23): 1920-1921.
36. CHAUVIN, R (1968) Action physiologique et therapeutique des produits de la ruche *Traite de biologie de l'abeille*, Masson; Paris; pp 116-154.
37. CHAUVIN, R (1968) Action physiologique et therapeutique des produits de la ruche *Traite de biologie de l'abeille*, Masson; Paris; pp 116-154.
38. CHAUVIN, R (1987) *La ruche et l'homme*. Calmann-Lévy, France
39. CHEN, Y F; WANG, K; ZHANG, Y Z; ZHENG, Y F; HU, F L (2016) In Vitro Anti-Inflammatory Effects of Three Fatty Acids from Royal Jell. *Mediators of Inflammation*, Article ID 3583684,
40. CHO, Y; KIM, J; SHIN, J; BAE, M; SHIN, M K (2016) Dietary royal jelly improves epidermal hydration with increased levels of ceramides in the epidermis of mid-aged healthy human subjects. *Journal of Dermatological Science* 84, e35
41. CHO, Y T (1977) Studies on royal jelly and abnormal cholesterol and triglycerides. *American Bee Journal* 117: 36-38.
42. DAWSON, H; RUBOTTOM, R; HARRIS, L (1962) The effect of administration of royal jelly on the differentiation and growth of newborn rats. *The Anatomical record* 142: 123-129.
43. DELKHOSHE-KASMAIE, F; MALEKINEJAD, H; KHORAMJOUY, M; REZAEI-GOLMISHEH, A; JANBAZE-ACYABAR, H (2014) Royal jelly protects from taxol-induced testicular damages via improvement of antioxidant status and up-regulation of E2f1. *Systems Biology in Reproductive Medicine* 60 (2): 80-88.
44. DEREVICI, A; PETRESCO, A (1959) [Virulicidal action and action on Ehrlich ascites tumor of the hydrosoluble fraction of royal jelly of the honey bee]. *California Medicine* 153: 1720-1722.

45. DEREVICI, A; PETRESCU, A (1960) [Effect of water-soluble extract of royal jelly of the honeybee on various viruses]. *Voprosy Virusologii* 6: 611-614.
46. DESTREM, H (1981) Gelée royale bei älteren Menschen. *Bienenwelt* 23 (6): 149-153.
47. DIOMEDE-FRESA, V; LA PESA, M; RESTUCCIA, P (1966) [Influence of royal jelly on the appearance and development of IRE reticulo-sarcoma]. *Pathologica* 58 (865): 309-315.
48. DUTAU, G; RANCE, F (2009) Honey and honey-product allergies. *Revue Francaise D Allergologie* 49 (6): S16-S22.
49. DZOPALIC, T; VUCEVIC, D; TOMIC, S; DJOKIC, J; CHINO, I; COLIC, M (2011) 3,10-Dihydroxy-decanoic acid, isolated from royal jelly, stimulates Th1 polarising capability of human monocyte-derived dendritic cells. *Food Chemistry* 126 (3): 1211-1217.
50. EL NEKEETY, A A; EL KHOLY, W; ABBAS, N F; EBAID, A; AMRA, H A; ABDEL-WAHAB, M A (2007) Efficacy of royal jelly against the oxidative stress of fumonisin in rats. *Toxicon* 50 (2): 256-269.
51. EL-HANOUN, A M; ELKOMY, A E; FARES, W A; SHAHIEN, E (2014) Impact of royal jelly to improve reproductive performance of male rabbits under hot summer conditions. *World Rabbit Science* 22: 241-248.
52. ELNAGAR, S (2010) Royal jelly counteracts bucks' "summer infertility". *Anim.Repr.Sci.* 121: 174-180.
53. EREM, C; DEGER, O; OVALI, E; BARLAK, Y (2006) The effects of royal jelly on autoimmunity in Graves' disease. *Endocrine* 30 (2): 175-183.
54. EUROPEAN PARLIAMENT AND COUNCIL (2007) REGULATION (EC) No 1924/2006 OF THE EUROPEAN PARLIAMENT AND OF THE COUNCIL of 20 December 2006 on nutrition and health claims made on foods. *Official Journal of the European Union* L 404: L 12-3-L 12/17.
55. EUROPEAN PARLIAMENT AND COUNCIL (2007) REGULATION (EC) No 1924/2006 OF THE EUROPEAN PARLIAMENT AND OF THE COUNCIL of 20 December 2006 on nutrition and health claims made on foods. *Official Journal of the European Union* L 404: L 12-3-L 12/17.
56. FANG, E; ZHOU, H; XU, H; XING, M (1994) Antiulcer effects of 10-hydroxy-2-decanoic acid in rats. *Zhongguo Yaolixue Tongbao* 10 (2): 9-42.
57. FATEEVA, E M; ROSHAL, L (1962) [Use of the preparation bee milk in children with chronic disorders of nutrition]. *Pediatrria.* 41: 15-19.
58. FIGUEIREDO, I; QUEIROZ, N; OSORIO, C; OLINDA, T; BENEVIDES, F; OLIVEIRA, R; ALENCAR, N; ARAGAO, K; GONCALVES, D (2012) Gastroprotective effect of royal jelly in a model of acute gastric lesion and over gastrointestinal motility. *Planta medica* 78 (11): 1249.
59. FINKE, M D (2005) Nutrient composition of bee brood and its potential as human food. *Ecology of Food and Nutrition* 44 (4): 257-270.
60. FONTANA, R; MENDES, M A; DE SOUZA, B M; KONNO, K; CESAR, L M M; MALASPINA, O; PALMA, M S (2004) Jelleines: a family of antimicrobial peptides from the Royal Jelly of honeybees (*Apis mellifera*). *Peptides* 25 (6): 919-928.
61. FONTANA, R; MENDES, M A; DE SOUZA, B M; KONNO, K; CESAR, L M M; MALASPINA, O; PALMA, M S (2004) Jelleines: a family of antimicrobial peptides from the Royal Jelly of honeybees (*Apis mellifera*) 110. *Peptides* 25 (6): 919-928.
62. FOSSATI, C (1972) Rassegne sintetiche di terapia. Sulle possibilità terapeutiche della "gelatina reale"[Therapeutic possibilities of royal jelly]. *Clinica Terapeutica* 62 (4): 377-387.
63. FRATINI, F; CILIA, G; MANCINI, S; FELICOLI, A (2016) Royal Jelly: An ancient remedy with remarkable antibacterial properties. *Microbiological Research*, 192: 130-141.
64. FUJII, A (1995) Pharmacological effects of royal jelly 1043. *Honeybee Science* 16 (3): 97-104.

65. FUJIWARA, H; SAKAMOTO, M; YAMAKUNI, T; MIMAKI, Y; MURATA, K; HITOMI, N; YAMAGUCHI, K; OHIZUMI, Y (2011) Honeybee Royal Jelly and Nobiletin Stimulate CRE-Mediated Transcription in ERK-Independent and -Dependent Fashions, Respectively, in PC12D Cells. *J Pharmacol Sci (Japan)* July 9
66. FUJIWARA, H E A (2011) Honeybee royal jelly and nobiletin stimulate CRE-mediated transcription in ERK-independent and-dependent fashions, respectively, in PC12D cells. *ournal of pharmacological sciences* 116: 384-387.
67. FUJIWARA, S; IMAI, J; FUJIWARA, M; YAESHIMA, T; KAWASHIMA, T; KOBAYASHI, K (1990) A potent antibacterial protein in royal jelly. Purification and determination of the primary structure of royalisin. *J.Biol.Chem.* 265 (19): 11333-11337.
68. FURUKAWA, S (2008) Stimulatory Effects of Royal Jelly on the Generation of Neuronal and Glial Cells - Expectation of Protection Against Some Neurological Disorders. *Foods and Food Ingredients J.Jpn* 213 (7)
69. GALAN, M F (1957) [Royal jelly as a coadjuvant in the therapy of degenerative rheumatism.]. *Medicina Espanola* 37 (219): 524-531.
70. GASIC, S; VUCEVIC, D; VASILJIC, S; ANTUNOVIC, M; CHINO, I; COLIC, M (2007) Evaluation of the immunomodulatory activities of royal jelly components in vitro
36. *Immunopharmacology and Immunotoxicology* 29 (3-4): 521-536.
71. GIMBEL, N S; THRELKELD, R; FARRIS, W (1962) Epithelization in experimental burn blisters, *In Artz, C P (ed.) Research in Burns*, Am. Inst. Biol. Sci. and Blackwell Scientific Publication; Oxford, GB; pp 311-314.
72. GIORDANO, A; TRENTA, A; MAZZA, L (1959) [Research on the eventual radioprotective action of royal jelly on the mouse. Experimental contribution]. *Radiobiologia, Radioterapia e Fisica Medica* 14: 423-439.
73. GONNARD, P; N'GUYEN, C C (1957) [Action of royal jelly on oxygen consumption in tissues in vitro.]. *Annales pharmaceutiques francaises* 15 (6): 383-393.
74. GORPICHERNKO, I; GURJENKO, J (2013) Efficiency of the preparation Enduran Forte, based on Royal Jelly in the therapy of excretory chronic male infertility. *Male Health (Russ)* 2: 66-69.
75. GRAD, B; KRAL, V A; BERENSON, J (1961) Toxic and protective effects of royal jelly in normal and diseased mice. *Canadian journal of medical sciences* 39: 461-476.
76. GRAD, B; KRAL, V A; BERENSON, J (1961) Toxic and protective effects of royal jelly in normal and diseased mice. *Canadian journal of medical sciences* 39: 461-476.
77. GULDAS, M (2016) Effects of Royal Jelly and Bee Pollen on the Growth of Selected Probiotic Bacteria (*Bf. animalis* Spp. *Lactis*, *L. acidophilus* and *L. casei*). *J Apicult Sci* 60: 129-140.
78. GUO, H; KOUZUMA, Y; YONEKURA, M (2005) Isolation and properties of antioxidative peptides from water-soluble royal jelly protein hydrolysate. *Food Science and Technology Research* 11 (2): 222-230.
79. GUO, H; KOUZUMA, Y; YONEKURA, M (2009) Structures and properties of antioxidative peptides derived from royal jelly protein. *Food Chemistry* 113 (1): 238-245.
80. GUO, H; SAIGA, A; SATO, M; MIYAZAWA, I; SHIBATA, M; TAKAHATA, Y; MORIMATSU, F (2007) Royal jelly supplementation improves lipoprotein metabolism in humans. *JOURNAL OF NUTRITIONAL SCIENCE AND VITAMINOLOGY* 53 (4): 345-348.
81. GYUZUKINA, E; DIMITRIEVA, N (1993) Efektivnost preparata nativnovo pchelnovo molokchkd adsorbirovannovo na laktose m,r kandidoznoi infektzii u nedonoshanich novorodenich. *Apiterapia sevodnja* (2): 23-26.
82. GYUZUKINA, E; DIMITRIEVA, N (1998) O srokah priminenia matochnova molochka u prejdevremerenno rojdenich detei. *Apiterapia sevodnja* (6): 85-87.

83. HADDADIN, M S; HADDADIN, J; BENGUIAR, R (2012) The effect of royal jelly on growth and short-chain fatty acid production of probiotic bacteria and activity of bacterial procarcinogenic enzymes in rat faeces. *Polish Journal of Food and Nutrition Sciences* 62: 251-258.
84. HAN, S; KIM, J; HONG, I; WOO, S; KIM, S; JANG, H; PARK, K; PAK, S (2015) Whitening Effect of Watersoluble Royal Jelly from South Korea. *Korean J Food Sci Anim Resour.* 35: 707-713.
85. HAN, S M; YEO, J H; CHO, Y H; PAK, S C (2011) Royal Jelly Reduces Melanin Synthesis Through Down-Regulation of Tyrosinase Expression. *American Journal of Chinese Medicine* 39 (6): 1253-1260.
86. HANG, G U O E AL (2007) Royal jelly supplementation improves lipoprotein metabolism in humans. *JOURNAL OF NUTRITIONAL SCIENCE AND VITAMINOLOGY* 53: 345-348.
87. HASHIMOTO, M; KANDA, M; IKENO, K; HAYASHI, Y; NAKAMURA, T; OGAWA, Y; FUKUMITSU, H; NOMOTO, H; FURUKAWA, S (2005) Oral administration of royal jelly facilitates mRNA expression of glial cell line-derived neurotrophic factor and neurofilament H in the hippocampus of the adult mouse brain. *Bioscience Biotechnology and Biochemistry* 69 (4): 800-805.
88. HASSAN, A (2009) Effect of royal jelly on sexual efficiency in adult male rats. *Iraq J.Vet.Sci.* 23: 155-160.
89. HATTORI, N; NOMOTO, H; FUKUMITSU, H; MISHIMA, S; FURUKAWA, S (2007) AMP N1-oxide Potentiates Astrogenesis by Cultured Neural Stem/Progenitor Cells Through STAT3 Activation. *Biomedical Research-Tokyo* 28 (6): 295-299.
90. HATTORI, N; NOMOTO, H; FUKUMITSU, H; MISHIMA, S; FURUKAWA, S (2007) Royal jelly and its unique fatty acid, 10-hydroxy-trans-2-decenoic acid, promote neurogenesis by neural stem/progenitor cells in vitro. *Biomedical Research-Tokyo* 28 (5): 261-266.
91. HATTORI, N; NOMOTO, H; FUKUMITSU, H; MISHIMA, S; FURUKAWA, S (2007) Royal jelly-induced neurite outgrowth from rat pheochromocytoma PC12 cells requires integrin signal independent of activation of extracellular signal-regulated kinases. *Biomedical Research-Tokyo* 28 (3): 139-146.
92. HATTORI, N; NOMOTO, H; FUKUMITSU, H; MISHIMA, S; FURUKAWA, S (2010) AMP N-1-oxide, a unique compound of royal jelly, induces neurite outgrowth from PC12 cells via signaling by protein kinase A independent of that by mitogen-activated protein kinase. *Evidence-based complementary and alternative medicine* 7 (1): 63-68.
93. HATTORI, N; NOMOTO, H; MISHIMA, S; INAGAKI, S; GOTO, M; SAKO, M; FURUKAWA, S (2006) Identification of AMP N-1-oxide in royal jelly as a component neurotrophic toward cultured rat pheochromocytoma PC12 cells. *Bioscience Biotechnology and Biochemistry* 70 (4): 897-906.
94. HATTORI, N; OHTA, S; SAKAMOTO, T; MISHIMA, S; FURUKAWA, S (2011) Royal Jelly Facilitates Restoration of the Cognitive Ability in Trimethyltin-Intoxicated Mice. *Evidence-based complementary and alternative medicine*
95. HENSCHLER, D (1956) [Identification of choline esters in biological material, especially acetylcholine in royal jelly of bee]. *Hoppe-Seyler's Zeitschrift für physiologische Chemie* 305 (1): 34-41.
96. HIDAKA, S; OKAMOTO, Y; UCHIYAMA, S; NAKATSUMA, A; HASHIMOTO, K; OHNISHI, S T; YAMAGUCHI, M (2006) Royal jelly prevents osteoporosis in rats: Beneficial effects in ovariectomy model and in bone tissue culture model. *Evidence-based complementary and alternative medicine* 3 (3): 339-348.
97. HINGLAIS, H; HINGLAIS, M; GAUTHERIE, J (1956) [Hormonal study of royal jelly; research on the gonadotrophic principles and substances of estrogenic action]. *Comptes rendus des Séances de l'Academie des Sciences* 242 (20): 2482-2483.
98. HINGLAIS, H; HINGLAIS, M; GAUTHERIE, J (1956) [Research on the anabolic properties of royal jelly; experiments in the rat]. *C.R.Soc.Biol.* 150 (12): 2130-2131.
99. HINGLAIS, H; HINGLAIS, M; GAUTHERIE, J; LANGLANDE, M (1955) [Study of the bactericidal and antibiotic effect of royal jelly on Koch bacillus]. *Annales de l'Institut Pasteur* 89 (6): 684-686.

100. HONDA, Y; ARAKI, Y; HATA, T; ICHIHARA, K; ITO, M; TANAKA, M; HONDA, S (2015) 10-Hydroxy-2-decenoic Acid, the Major Lipid Component of Royal Jelly, Extends the Lifespan of *Caenorhabditis elegans* through Dietary Restriction and Target of Rapamycin Signaling. *eCam* <http://dx.doi.org/10.1155/2015/425261>
101. HONDA, Y; FUJITA, Y; MARUYAMA, H; ARAKI, Y; ICHIHARA, K; SATO, A; KOJIMA, T; TANAKA, M; NOZAWA, Y; ITO, M; HONDA, S (2011) Lifespan-Extending Effects of Royal Jelly and Its Related Substances on the Nematode *Caenorhabditis elegans*. *Plos One* 6 (8)
102. HOVANSKA, S (1997) Biologically active bee products food additives and the resistance of the developing organism (In Russian), *5th Scientific Apitherapy Conference*, Ribnoe: pp 175-176.
103. HUSEIN, M Q; HADDAD, S G (2006) A new approach to enhance reproductive performance in sheep using royal jelly in comparison with equine chorionic gonadotropin. *Animal Reproduction Science* 93 (1-2): 24-33.
104. HUSEIN, M Q; KRIDL, R T (2002) Reproductive responses following royal jelly treatment administered orally or intramuscularly into progesterone-treated Awassi ewes. *Animal Reproduction Science* 74 (1-2): 45-53.
105. IBRAHIM, M (2015) Insulin Autoantibodies (IAA) and the effect of royal jelly on Type 1 diabetic patients. PhD Thesis, University of Khartoum
106. ILIASH, N (1962) Primenenie preparata matochnoe molochko pri narushenie pitanii u detei grudnovo vozrasti. *Inform.Bulletin o matochnoe molochko, Rjazan* (3): 50-53.
107. INOUE, S; KOYA-MIYATA, S; USHIO, S; IWAKI, K; IKEDA, M; KURIMOTO, M (2003) Royal Jelly prolongs the life span of C3H/HeJ mice: correlation with reduced DNA damage. *Experimental gerontology* 38 (9): 965-969.
108. ITO, S; NITTA, J; FUKUMITSU, H; SOUMIYA, H; IKENO, K; NAKAMURA, T; FURUKAWA, S (2011) Antidepressant-like activity of 10-hydroxy-trans-2-decenoic acid, a unique unsaturated fatty acid of royal jelly, in stress-inducible depression-like mouse model. *eCam* 23 May
109. ITO, S; NITTA, Y; FUKUMITSU, H; SOUMIYA, H; IKENO, K; NAKAMURA, T; FURUKAWA, S (2012) Antidepressant-Like Activity of 10-Hydroxy-Trans-2-Decenoic Acid, a Unique Unsaturated Fatty Acid of Royal Jelly, in Stress-Inducible Depression-Like Mouse Model. *Evidence-based complementary and alternative medicine*: 1-6.
110. IZAR, G (1957) [Honey & royal jelly in therapeutic use.]. *Minerva medica* 48 (54): 2323-2327.
111. IZUTA, H; CHIKARAISHI, Y; SHIMAZAWA, M; MISHIMA, S; HARA, H (2009) 10-Hydroxy-2-decenoic Acid, a Major Fatty Acid from Royal Jelly, Inhibits VEGF-induced Angiogenesis in Human Umbilical Vein Endothelial Cells. *Evidence-based complementary and alternative medicine* 6 (4): 489-494.
112. JAMNIK, P; GORANOVIC, D; RASPOR, P (2006) Antioxidative action of royal jelly in yeast *Saccharomyces cerevisiae*. *Febs Journal* 273: 300-301.
113. JAMNIK, P; GORANOVIC, D; RASPOR, P (2007) Antioxidative action of royal jelly in the yeast cell. *Experimental gerontology* 42 (7): 594-600.
114. JENTER, K (2002) New and economic production of royal jelly and its rapid conservation using a revised method. *Bienenpflege* (5): 177-179.
115. JOKSIMOVIC, A; STANKOVIC, D; JOSKIMOVIC, I; MOLNAR, S; JOKSIMOVIC, S (2011) Royal jelly as supplement for young football players. *Sport Science* 1: 62-67.
116. KACZOR, M; KOLTEK, A; MATUSZEWSKI, J (1962) [Effect of roya lejly on blood lipids in atherosclerosis]. *Polski Tygodnik Lekarski* 17: 1140-1144.
117. KAFTANOGLU, O; TANYELI, A (1997) The use of royal jelly during treatment of childhood malignancies, *Bee Products.Properties, Applications, and Apitherapy*: pp 179-183.

118. KAMAKURA, M (2002) Signal transduction mechanism leading to enhanced proliferation of primary cultured adult rat hepatocytes treated with royal jelly 57kDa protein. *Journal of Biochemistry* 132 (6): 911-919.
119. KAMAKURA, M; FUKUDA, T; FUKUSHIMA, M; YONEKURA, M (2001) Storage-dependent degradation of 57-kDa protein in royal jelly: a possible marker for freshness. *Bioscience, Biotechnology and Biochemistry* 65 (2): 277-284.
120. KAMAKURA, M; MITANI, N; FUKUDA, T; FUKUSHIMA, M (2001) Antifatigue effect of fresh royal jelly in mice. *JOURNAL OF NUTRITIONAL SCIENCE AND VITAMINOLOGY* 47 (6): 394-401.
121. KAMAKURA, M; SUENOBU, N; FUKUSHIMA, M (2001) Fifty-seven-kDa protein in royal jelly enhances proliferation of primary cultured rat hepatocytes and increases albumin production in the absence of serum. *Biochemical and Biophysical Research Communications* 282 (4): 865-874.
122. KARACA, T; BAYIROGLU, F; YORUK, M; KAYA, M S; USLU, S; COMBA, B; MIS, L (2010) Effect of royal jelly on experimental colitis induced by acetic acid and alteration of mast cell distribution in the colon of rats. *European Journal of Histochemistry* 54 (4): 193-196.
123. KARACAL, F; ARAL, F (2008) Effect of the royal jelly on sperm quality in mice. *Indian Veterinary Journal* 85 (3): 331-332.
124. KASHIMA, Y; KANEMATSU, S; ASAI, S; KUSADA, M; WATANABE, S; KAWASHIMA, T; NAKAMURA, T; SHIMADA, M; GOTO, T; NAGAOKA, S (2014) Identification of a Novel Hypocholesterolemic Protein, Major Royal Jelly Protein 1, Derived from Royal Jelly. *Plos One* 9 (8)
125. KHOSHPEY, B E AL (2016) Effect of Royal Jelly Intake on Serum Glucose, Apolipoprotein AI (ApoA-I), Apolipoprotein B (ApoB) and ApoB/ApoA-I Ratios in Patients with Type 2 Diabetes: A Randomized, Double-Blind Clinical Trial Study. *Canadian journal of diabetes*, 40: 324-328.
126. KIM, J; KIM, Y; YUN, H; PARK, H; KIM, S Y; LEE, K G; HAN, S M; CHO, Y (2010) Royal jelly enhances migration of human dermal fibroblasts and alters the levels of cholesterol and sphinganine in an in vitro wound healing model. *Nutrition Research and Practice* 4 (5): 362-368.
127. KIMURA, M; KIMURA, Y; TSUMURA, K; OKIHARA, K; SUGIMOTO, H; YAMADA, H; YONEKURA, M (2003) 350-kDa royal jelly glycoprotein (apisin), which stimulates proliferation of human monocytes, bears the beta 1-3galactosylated N-glycan: Analysis of the N-glycosylation site. *Bioscience, Biotechnology and Biochemistry* 67 (9): 2055-2058.
128. KIMURA, Y; KAJIYAMA, S; KANAEDA, J; IZUKAWA, T; YONEKURA, M (1996) N-linked sugar chain of 55-kDa royal jelly glycoprotein. *Bioscience, Biotechnology and Biochemistry* 60 (12): 2099-2102.
129. KIMURA, Y; MIYAGI, C; KIMURA, M; NITODA, T; KAWAI, N; SUGIMOTO, H (2000) Structural features of N-glycans linked to royal jelly glycoproteins: structures of high-mannose type, hybrid type, and biantennary type glycans. *Bioscience, Biotechnology and Biochemistry* 64 (10): 2109-2120.
130. KIMURA, Y; TSUMURA, K; KIMURA, M; OKIHARA, K; SUGIMOTO, H; YAMADA, H (2003) First evidence for occurrence of Gal beta 1-3GlcNAc beta 1-4Man unit in N-glycans of insect glycoprotein: beta 1-3Gal and beta 1-4GlcNAc transferases are involved in N-glycan processing of royal jelly glycoproteins. *Bioscience, Biotechnology and Biochemistry* 67 (8): 1852-1856.
131. KIMURA, Y; WASHINO, N; YONEKURA, M (1995) N-linked sugar chains of 350-kDa royal jelly glycoprotein. *Bioscience, Biotechnology and Biochemistry* 59 (3): 507-509.
132. KOC, A N; SILICI, S; KASAP, F; HORMET-OZ, H T; MAVUS-BULDU, H; ERCAL, B D (2011) Antifungal Activity of the Honeybee Products Against *Candida* spp. and *Trichosporon* spp. *Journal of Medicinal Food* 14 (1-2): 128-134.
133. KOHGUCHI, M; INOUE, S; USHIO, S; IWAKI, K; IKEDA, M; KURIMOTO, M (2004) Effect of royal jelly diet on the testicular function of hamsters. *Food Science and Technology Research* 10 (4): 420-423.

134. KOHNO, K; OKAMOTO, I; SANO, O; ARAI, N; IWAKI, K; IKEDA, M; KURIMOTO, M (2004) Royal jelly inhibits the production of proinflammatory cytokines by activated macrophages. *Bioscience Biotechnology and Biochemistry* 68 (1): 138-145.
135. KOYA-MIYATA, S; OKAMOTO, I; USHIO, S; IWAKI, K; IKEDA, M; KURIMOTO, M (2004) Identification of a collagen production-promoting factor from an extract of royal jelly and its possible mechanism. *Bioscience Biotechnology and Biochemistry* 68 (4): 767-773.
136. KRAMER, K; CHILDS, C N; SPIERS, R; JACOBS, R (1982) Purification of insulin-like peptides from insect haemolymph and royal jelly. *Insect Biochem* 12: 91-98.
137. KRELL, R (1996) *Value-added products from beekeeping*. FAO Food and Agriculture Organization of the United Nations Roma; 409 pp
138. KRIDL, R T; AL KHETIB, S S (2006) Reproductive responses in ewes treated with eCG or increasing doses of royal jelly. *Animal Reproduction Science* 92 (1-2): 75-85.
139. KRIDL, R T; HUSEIN, M Q; HUMPHREY, W D (2003) Effect of royal jelly and GnRH on the estrus synchronization and pregnancy rate in ewes using intravaginal sponges. *Small Ruminant Research* 49 (1): 25-30.
140. KRIDL, R T; HUSEIN, M Q; HUMPHREY, W D (2003) Effect of royal jelly and GnRH on the estrus synchronization and pregnancy rate in ewes using intravaginal sponges. *Small Ruminant Research* 49 (1): 25-30.
141. KRYLOV V.N; KOPYLOVA, S; KUZNETSOVA, C; OVCHINNIKOV A.N. (2015) **THE EFFECTS OF ROYAL JELLY AND UBIQUINONE-10 ON HEART RATE VARIABILITY OF QUALIFIED SWIMMERS DURING PHYSICAL EXERTION**. *Theory and Practice of Sport* 1: 23-26.
142. KRYLOV, V; AGAFONOV, A; KRIVTSOV, N; LEBEDEV, V; BURIMISTROVA, L; OSHEVENSKI, L; SOKOLSKI, S (2007) *Theory and agents of apitherapy (in Russian)*. Moscow
143. KRYLOV, V; SOKOLSKII C. (2000) *Royal jelly (in Russian)*. Agroprompoligrafist Krasnodar; 214 pp
144. KRYLOV, V; SOKOLSKII C. (2000) *Royal jelly (in Russian)*. Agroprompoligrafist Krasnodar; 214 pp
145. KRYLOV, V N; KOPYLOVA, S V; SOKOLSKIY, S (2006) Experimental study of bee royal jelly cardioprotective characteristics. *Mellifera* 6 (7): 28-32.
146. KURKURE, N V; KOGNOLE, S M; PAWAR, S P; GANORKAR, A G; BHANDARKAR, A G; INGLE, V C; KALOREY, D R (2000) Effect of royal jelly as immunomodulator in chicks. *Journal of Immunology & Immunopathology* 2 (1/2): 84-87.
147. KUZINA, N G (1987) [Action of apilak on the electrolyte and catecholamine content of the wall of arterial vessels at different levels of systemic arterial pressure]. *Farmakologiya i Toksikologiya* 50 (3): 46-49.
148. KUZINA, N G (1987) [Action of apilak on the electrolyte and catecholamine content of the wall of arterial vessels at different levels of systemic arterial pressure]. *Farmakologiya i Toksikologiya* 50 (3): 46-49.
149. LAKIN, A (1993) Royal jelly and its efficacy. *International Journal of Alternative and Complementary Medicine* 11 (10): 19-22.
150. LAMBRINOUDAKI, I E A (2016) Greek-origin royal jelly improves the lipid profile of postmenopausal women. *Gynecological Endocrinology* 32: 1-5.
151. LANGLADE, H; HINGLAIS, H; HINGLAIS, M (1957) [Bactericidal activity of royal jelly on Koch bacillus; trial fractionation on active substance.]. *Annales de l'Institut Pasteur* 93 (2): 272-276.
152. LEBEDEVA, E (1959) K voprosu o primenenij matochnovo molochka u detei do goda (Use of royal jelly to treat hypertrophy of infants until one year old). *Inform.Buletin o matochnom moloke* 1: 6-19.

153. LERCKER, G; CABONI, M F; VECCHI, M A; SABATINI, A G; NANETTI, A (1992) Characterization of the main constituents of royal jelly
410. *Apicoltura* (8): 27-37.
154. LERCKER, G; CABONI, M F; VECCHI, M A; SABATINI, A G; NANETTI, A (1993) Caratterizzazione dei principali costituenti della gelatina reale. *Apicoltura* 8: 27-37.
155. LERRER, B; ZINGER-YOSOVICH, K D; AVRAHAMI, B; GILBOA-GARBER, N (2007) Honey and royal jelly, like human milk, abrogate lectin-dependent infection-preceding *Pseudomonas aeruginosa* adhesion. *Isme Journal* 1 (2): 149-155.
156. LEUNG, R; HO, A; CHAN, J; CHOY, D; LAI, C K W (1997) Royal jelly consumption and hypersensitivity in the community. *Clinical and Experimental Allergy* 27: 333-336.
157. LEUNG, R; THIEN, F C K; BALDO, B; CZARNY, D (1995) Royal jelly-induced asthma and anaphylaxis: clinical characteristics and immunologic correlations
1214. *Journal of Allergy and Clinical Immunology* 96 (6, pt 1): 1004-1007.
158. LEWIS, R (2004) *The Infertility Cure: The Ancient Chinese Wellness Program for Getting Pregnant and Having Healthy Babies*. Little Brown and Company; 303 pp
159. LI, C C; MANNOOR, M K; TOMA, N; TANIGUCHI, T; INAFUKU, M; YAMAGUCHI, K; SATO, Y; WATANABE, H (2011) The efficacy of Royal Jelly in the restoration of alcoholic liver injury in mouse model. *Biomedical Research-India* 22 (1): 1-8.
160. LI, J K; WANG, T; PENG, W J (2007) Comparative analysis of the effects of different storage conditions on major royal jelly proteins. *Journal of Apicultural Research* 46 (2): 73-80.
161. LINDER, J (1963) Activity of royal jelly against various Trypanosomidae. *Journal of Apicultural Research* 2 (1): 71-72.
162. LIU, J R; YANG, Y C; SHI, L S; PENG, C C (2008) Antioxidant Properties of Royal Jelly Associated with Larval Age and Time of Harvest. *Journal of agricultural and food chemistry* 56 (23): 11447-11452.
163. LOPEZ-GUTIERREZ, N; AGUILERA-LUIZ, M D; ROMERO-GONZALEZ, R; VIDAL, J L M; FRENICH, A G (2014) Fast analysis of polyphenols in royal jelly products using automated TurboFlow (TM)-liquid chromatography-Orbitrap high resolution mass spectrometry. *Journal of Chromatography B-Analytical Technologies in the Biomedical and Life Sciences* 973: 17-28.
164. LUDYANSKII, E A (1994) *Apitherapy*
1231. Poligrafist Vologda, Russia
165. LUPACHEV, V (1965) *Apilac for the healing of coronary arteriosclerosis*. Ryazan University Ryazan
166. MAGDALENA, M (2010) Effect of royal jelly on breast infant with dystrophy and maldevelopment, *In Apimondia* (ed.) *20th Apimondia International Beekeeping Congress in Bukarest, Romania*: pp 583-585.
167. MAHMOUD, S A; EL-BANBY, A M; EL-SHAKANKIRY, H M; ABDEL-HAMID, K M; HASSABEL-NABY, M A (1997) Effect of diet supplementation with honey or royal jelly on preterms. Wirkung einer zusätzlichen Ernährung mit Honig oder Weiselfuttersaft bei Frühgeborenen *Der XXXV. Internationale Bienenzüchterkongress der Apimondia Antwerpen*, Apimondia-Verlag; Bukarest, Rumänien; pp 432.
168. MAJTAN, J; KOVACOVA, E; BILIKOVA, K; SIMUTH, J (2006) The immunostimulatory effect of the recombinant apalbumin 1-major honeybee royal jelly protein-on TNF alpha release. *International immunopharmacology* 6 (2): 269-278.
169. MAJTAN, J; KUMAR, P; MAJTAN, T; WALLS, A F; KLAUDINY, J (2010) Effect of honey and its major royal jelly protein 1 on cytokine and MMP-9 mRNA transcripts in human keratinocytes. *Experimental Dermatology* 19 (8): E73-E79.

170. MALOSSI, C; GRANDI, F (1956) Osservazioni sulla gelatina reale nell'alimentazione degli immaturi. Atti del 10 convegno nazionale per lo studio dell' applicazione dei prodotti delle api nel campo medico-biologico, Bologna, Italy: pp 130-133.
171. MANNOOR, M K; SHIMABUKURO, I; TSUKAMOTO, M; WATANABE, H; YAMAGUCHI, K (2009) Honeybee royal jelly inhibits autoimmunity in SLE-prone NZB x NZW F1 mice. *Lupus* (1): 44-52.
172. MANNOOR, M K; TSUKAMOTO, M; WATANABE, H; YAMAGUCHI, K; SATO, Y (2008) The efficacy of royal jelly in the restoration of stress-induced disturbance of lymphocytes and granulocytes. *Biomedical Research-India* 19 (2): 69-77.
173. MANZO, L P; DE-FARIA, F M; DUNDER, R J; RABELO-SOCCA, E A; CONSONNI, S R; DE ALMEIDA, A C A; SOUZA-BRITO, A R M; LUIZ-FERREIRA, A (2015) Royal jelly and its dual role in TNBS colitis in mice. *Scientific World Journal* DOI: 10.1155/2015/956235
174. MARCONI, E; CABONI, M F; MESSIA, M C; PANFILI, G (2002) Furosine: a suitable marker for assessing the freshness of royal jelly. *Journal of agricultural and food chemistry* 50 (10): 2825-2829.
175. MARUYAMA, H; YOSHIDA, C; TOKUNAGA, K; ARAKI, Y; MISHIMA, S (2005) The effect of a peptide (Ile-Val-Tyr) derived from royal jelly treated with protease on blood pressure of spontaneously hypertensive rat. *Journal of the Japanese Society for Food Science and Technology Nippon Shokuhin Kagaku Kogaku Kaishi* 52 (10): 491-494.
176. MATSUBARA, T; SUGIMOTO, H; AIDA, M (2008) A Theoretical Insight into the Interaction of Fatty Acids Involved in Royal Jelly with the Human Estrogen Receptor beta. *Bulletin of the Chemical Society of Japan* 81 (10): 1258-1266.
177. MATSUI, T; YUKIYOSHI, A; DOI, S; ISHIKAWA, H; MATSUMOTO, K (2006) Enzymatic hydrolysis of ethanol-insoluble proteins from royal jelly and identification of ACE inhibitory peptides. *Journal of the Japanese Society for Food Science and Technology Nippon Shokuhin Kagaku Kogaku Kaishi* 53 (4): 200-206.
178. MATSUI, T; YUKIYOSHI, A; DOI, S; SUGIMOTO, H; YAMADA, H; MATSUMOTO, K (2002) Gastrointestinal enzyme production of bioactive peptides from royal jelly protein and their antihypertensive ability in SHR. *JOURNAL OF NUTRITIONAL BIOCHEMISTRY* 13 (2): 80-86.
179. MATSUI, T; YUKIYOSHI, A; DOI, S; SUGIMOTO, H; YAMADA, H; MATSUMOTO, K (2002) Gastrointestinal enzyme production of bioactive peptides from royal jelly protein and their antihypertensive ability in SHR. *JOURNAL OF NUTRITIONAL BIOCHEMISTRY* 13 (2): 80-86.
180. MELLIUO, E; CHINO, I (2005) Chemistry and bioactivity of royal jelly from Greece. *J.Agricultural & Food Chemistry* 53: 8987-8992.
181. MISHIMA, S; SUZUKI, K M; ISOHAMA, Y; KURATSU, N; ARAKI, Y; INOUE, M; MIYATA, T (2005) Royal jelly has estrogenic effects in vitro and in vivo. *Journal of Ethnopharmacology* 101 (1-3): 215-220.
182. MIYAMOTO, M; TSUMURA, K; KIMURA, M; OKIHARA, S; SUGIMOTO, H; YAMADA, H; KIMURA, Y (2004) N-glycans bearing beta-1,3-galactosyl residue in royal jelly glycoproteins. *Glycobiology* 14 (11): 241.
183. MOBASSERI, M; GHIYASVAND, S; OSTADRAHIMI, A; GHOJAZADEH, M; NOSHAD, H; POURMORADIAN, S (2015) Effect of Fresh Royal Jelly Ingestion on Glycemic Response in Patients With Type 2 Diabetes. *Iran Red Crescent Med J.* 17(9): e20074.
184. MONTEVERDI, T; REITANO, S (1972) Eutrophic effect of a "natural food" (queen honeybee larvae) in a group of psychiatric patients. *Minerva Dietologica* 12 (4): 133-144.
185. MORITA, I E A (2012) Effect of royal jelly ingestion for six months on healthy volunteers. *Nutrition Journal* 11: 77.
186. MORIYAMA, T; YANAGIHARA, M; YANO, E; KIMURA, G; SEISHIMA, M; TANI, H; KANNO, T; NAKAMURA-HIROTA, T; HASHIMOTO, K; TATEFUJI, T; OGAWA, T; KAWAMURA, Y (2013) Hypoallergenicity and Immunological Characterization of Enzyme-Treated Royal Jelly from *Apis mellifera*. *Bioscience Biotechnology and Biochemistry* 77 (4): 789-795.

187. MORMONE, V; NUNZIATA, B; SPINA, D (1959) [Variations of some metabolic indices after the administration, by parenteral route, of royal jelly]. *La Clinica pediatrica* 41: 1143-1149.
188. MOUTSATSOU, P; PAPOUTSI, Z; KASSI, E; HELDRING, N; ZHAO, C; TSIAPARA, A; MELLIU, E; CHROUSOS, G; CHINO, I; KARSHIKOFF, A; NILSSON, L; DAHLMAN-WRIGHT, K (2010) Fatty Acids Derived from Royal Jelly Are Modulators of Estrogen Receptor Functions. *Plos One* 5: e15594.
189. MÜNSTEDT, K; BARGELLO, M; HAUENSCHILD, A (2009) Royal Jelly Reduces the Serum Glucose Levels in Healthy Subjects. *J Med Food* 12: 1170-1172.
190. MÜNSTEDT, K; BARGELLO, M; HAUENSCHILD, A (2009) Royal jelly and its lack of immediate influence on human serum fructose and serum lipids. *Journal of ApiProduct and ApiMedical Science* 1 (3): 90-91.
191. MÜNSTEDT, K; HENSCHEL, M; HAUENSCHILD, A; VON GEORGI, R (2009) Royal Jelly Increases High Density Lipoprotein Levels but in Older Patients Only. *J.Altern.Complem.Med* 15: 329-330.
192. NABAS, Z M; HADDADIN, M S; NAZER, I K (2014) The Influence of Royal Jelly Addition on the Growth and Production of Short Chain Fatty Acids of Two Different Bacterial Species Isolated from Infants in Jordan. *Pakistan Journal of Nutrition* 13: -43.
193. NAGAI, T; INOUE, R; SUZUKI, N; NAGASHIMA, T (2006) Antioxidant properties of enzymatic hydrolysates from royal jelly. *Journal of Medicinal Food* 9 (3): 363-367.
194. NAGAI, T; SAKAI, M; INOUE, R; INOUE, H; SUZUKI, N (2001) Antioxidative activities of some commercially honeys, royal jelly, and propolis. *Food Chemistry* 75 (2): 237-240.
195. NAKAYA, M; ONDA, H; SASAKI, K; YUKIYOSHI, A; TACHIBANA, H; YAMADA, K (2007) Effect of royal jelly on bisphenol A-induced proliferation of human breast cancer cells. *Bioscience Biotechnology and Biochemistry* 71 (1): 253-255.
196. NARITA, Y; NOMURA, J; OHTA, S; INOH, Y; SUZUKI, K M; ARAKI, Y; OKADA, S; MATSUMOTO, I; ISOHAMA, Y; ABE, K; MIYATA, T; MISHIMA, S (2006) Royal jelly stimulates bone formation: Physiologic and nutrigenomic studies with mice and cell lines. *Bioscience Biotechnology and Biochemistry* 70 (10): 2508-2514.
197. NARUMI, S (2004) Honeybee brood as a nutritional food. *Honeybee Science* 25 (3): 119-124.
198. NIU, K J; GUO, H; GUO, Y T; EBIHARA, S; ASADA, M; OHRUI, T; FURUKAWA, K; ICHINOSE, M; YANAI, K; KUDO, Y; ARAI, H; OKAZAKI, T; NAGATOMI, R (2013) Royal Jelly Prevents the Progression of Sarcopenia in Aged Mice In Vivo and In Vitro. *Journals of Gerontology Series A-Biological Sciences and Medical Sciences* 68 (12): 1482-1492.
199. NOMURA, M; MARUO, N; ZAMAMI, Y; TAKATORI, S; DOI, S; KAWASAKI, H (2007) Effect of long-term treatment with royal jelly on insulin resistance in Otsuka Long-Evans Tokushima Fatty (OLETF) rats 82. *Yakugaku Zasshi-Journal of the Pharmaceutical Society of Japan* 127 (11): 1877-1882.
200. OKA, H; EMORI, Y; KOBAYASHI, N; HAYASHI, Y; NOMOTO, K (2001) Suppression of allergic reactions by royal jelly in association with the restoration of macrophage function and the improvement of Th1/Th2 cell responses. *International immunopharmacology* 1 (3): 521-532.
201. OKAMOTO, I; TANIGUCHI, Y; KUNIKATA, T; KOHNO, K; IWAKI, K; IKEDA, M; KURIMOTO, M (2003) Major royal jelly protein 3 modulates immune responses in vitro and in vivo. *Life sciences.Pt.2: Biochemistry, general and molecular biology* 73 (16): 2029-2045.
202. OKAMOTO, I; TANIGUCHI, Y; KUNIKATA, T; KOHNO, K; IWAKI, K; IKEDA, M; KURIMOTO, M (2003) Major royal jelly protein 3 modulates immune responses in vitro and in vivo. *Life sciences.Pt.2: Biochemistry, general and molecular biology* 73 (16): 2029-2045.
203. OKUDA, H; KAMEDA, K; MORIMOTO, C; MATSUURA, Y; CHIKAKI, M; MING, J (1998) Studies on insulin-like substances in royal jelly and other substances in royal jelly which inhibit angiotensin-converting enzyme. *Honeybee Science* 19 (1): 9-14.

204. ORIBE, E; ARIOKA, T; FUKUDA, K; TATEFUJI, T; HASHIMOTO, K; MAEDA, K (2010) Moisturizing effect of royal jelly extract and its mechanism on skin. *Journal of Dermatology* 37: 77.
205. ORSOLIC, N; SACASES, F; DU SERT, P P; BASIC, I (2007) Antimetastatic ability of honey bee products. *Periodicum Biologorum* 109 (2): 173-180.
206. ORSOLIC, N; TERZIC, S; SVER, L; BASIC, I (2005) Honey-bee products in prevention and/or therapy of murine transplantable tumours. *Journal of the Science of Food and Agriculture* 85: 363-370.
207. OSINTZEVA, L; EFANOVA, N; KABISHEVA, V (2009) Drone brood homogenate for dog feeding (Russian). *Pcelovodstvo* (10)
208. OVCHINNIKOV A.N.; SELEZNEV V.V.; KRYLOVA E.V.; KRYLOV V.N. (2016) Effect of royal jelly and ubiquinone-10 on blood hemoglobin and lactate levels of elite swimmers in pre-season (Russ). *Theory and Practice of Sport (Russ)* 11: 29-31.
209. PAJOVIC, B; RADOJEVIC, N; DIMITROVSKI, A; TOMOVIC, S; VUKOVIC, M (2016) The therapeutic potential of royal jelly in benign prostatic hyperplasia. *The Aging Male*, 19: 192-196.
210. PARK, H M; HWANG, E; LEE, K G; HAN, S M; CHO, Y; KIM, S Y (2011) Royal Jelly Protects Against Ultraviolet B-Induced Photoaging in Human Skin Fibroblasts via Enhancing Collagen Production. *Journal of Medicinal Food* 14 (9): 899-906.
211. PARK, H M; CHO, M H; CHO, Y; KIM, S Y (2012) Royal Jelly Increases Collagen Production in Rat Skin After Ovariectomy. *Journal of Medicinal Food* 15 (6): 568-575.
212. PAVEL, C I; MARGHITAS, L A; DEZMIREAN, D S; TOMOS, L I; BONTA, V; SAPCALIU, A; BUTTSTEDT, A (2014) Comparison between local and commercial royal jelly - use of antioxidant activity and 10-hydroxy-2-decenoic acid as quality parameter. *Journal of Apicultural Research* 53 (1): 116-123.
213. PAVERO, A; CAVIGLIA, E (1957) [Royal jelly and its applications in therapy.]. *Archivio "E.Maragliano" di patologia e clinica* 13 (4): 1023-1033.
214. PEACOCK, S; MURRAY, V; TURTON, C (1995) Respiratory distress and royal jelly. *British Medical Journal* 311 (7018): 1472.
215. PEACOCK, S; MURRAY, V; TURTON, C (1995) Respiratory distress and royal jelly. *British Medical Journal* 311 (7018): 1472.
216. PEACOCK, S; MURRAY, V; TURTON, C (1995) Respiratory distress and royal jelly. *British Medical Journal* 311 (7018): 1472.
217. PEJCEV, P; BOJADZIEV, S; MAROVSKI, T (1965) [THE INFLUENCE OF ROYAL JELLY ON THE COURSE OF RADIATION SICKNESS IN WHITE RATS]. *Folia Med.(Plovdiv.)* 48: 69-73.
218. PEJTSCHIEFF, P; BELEWA-STAJKOWA, P; ATANASSOFF, N (1975) Einfluss des Weiselfuttersaftes auf den Sauerstoffverbrauch und die Aktivität der Adenosintriphosphatase in den Geweben weisser Mäuse *Der XXV. Internationale Bienenzüchterkongress Grenoble - Frankreich 1975*, Apimondia-Verlag; Bukarest, Rumänien; pp 248-251.
219. PENG, Y R; ZHONG, F X; YANG, B; GAO, R J; SU, F (2011) Effect of Royal Jelly on Learning and Memory Performance of Aged Rats. *Food Sci* 32: 269-272.
220. POPESCU, M P; ALEXANDRA, D; POPESCU, M (1987) [Royal jelly and its use in ophthalmology]. *Rev.Chir Oncol.Radiol.O.R.L Oftalmol.Stomatol.Ser.Oftalmol.* 31 (1): 53-56.
221. POPLAWSKY, A (2008) Food for Thought: Royal Jelly for the People. *The Central Sulcus* 4: 3-4.
222. POPOVA, A (1960) K voprosu o primenenii preparata matochnoe molochko pri kischechnom infantilisme. *Inform Bulletin Nauchn.Instituta Ribnoe* 4: 32-36.

223. POURMORADIAN S; MAHDAVI R; MOBASSERI M; FARAMARZI E; MOBASSERI M. (2014) Effects of royal jelly supplementation on glycemic control and oxidative stress factors in type 2 diabetic female: a randomized clinical trial. *Chin J Integr Med.* 20: 347-352.
224. PROHODA, I (2009) Apilaval products for functional nutrition. *Pcelovodstvo* (7)
225. PROSPERI, P; RAGAZZINI, F (1956) [Clinical uses of royal jelly in pediatrics]. *Rivista di Clinica Pediatrica* 58 (3): 319-332.
226. PYRZANOWSKA, J; PIECHAL, A; BLECHARZ-KLIN, K; GRAIKOU, K; WIDY-TYSZKIEWICZ, E; CHINOUI, I (2012) Chemical analysis of Greek royal jelly - Its influence of the long-term administration on spatial memory in aged rats. *Planta medica* 78 (11): 1248.
227. QUADRI, S (1956) [Use of royal jelly in dystrophy in young infants]. *Clinica Otorinolaringoiatrica* 38 (9): 686-690.
228. RAGAB, S S; IBRAHIM, M K (1999) Evaluation of some chemical, antibacterial and biological properties of fresh and refrigerated royal jelly. *Egyptian Journal of Microbiology* 34 (1): 115-128.
229. RAMADAN, M F; AL GHAMDI, A (2012) Bioactive compounds and health-promoting properties of royal jelly: A review. *Journal of Functional Foods* 4 (1): 39-52.
230. ROMANELLI, A; MOGGIO, L; MONTELLA, R C; CAMPIGLIA, P; IANNACCONE, M; CAPUANO, F; PEDONE, C; CAPPARELLI, R (2011) Peptides from Royal Jelly: studies on the antimicrobial activity of jelleins, jelleins analogs and synergy with temporins. *Journal of Peptide Science* 17 (5): 348-352.
231. RONDININI, B (1956) [Effect of royal jelly on blood sugar in diabetics]. *Clinica Otorinolaringoiatrica* 38 (9): 703-706.
232. SABATINI, A G; MARCAZZAN, G; CABONI, M F; BOGDANOV, S; ALMEIDA-MURADIAN, L B (2009) Quality and standardisation of royal jelly. *JAAS* 1: 1-6.
233. SARROUY, C; RAFFI, A; LEUTENEGER, M (1956) [Treatment of eight cases of severe infant hypotrophy by lyophilized extracts of royal jelly]. *Pediatric.* 11 (4): 409-412.
234. SAUTKIN, M (2010) Use of bee products in sport medicine, In Rakita, D; Krivtsov, N; Uzbekova, D G (eds) *Theoretical and practical basics of apitherapy (Russian)*, Roszdrav; Ryazan; pp 259-272.
235. SCHMITZOVA, J; KLAUDINY, J; ALBERT, S; SCHRODER, W; SCHRECKENGOST, W; HANES, J; JUDOVA, J; SIMUTH, J (1998) A family of major royal jelly proteins of the honeybee *Apis mellifera* L. *Cellular and Molecular Life Sciences* 54 (9): 1020-1030.
236. SERES, A (2014) SEXUAL HORMONE EFFECTS OF HONEYBEE (*APIS MELLIFERA*) DRONE MILK IN MALE AND FEMALE RATS. University of Szeged, Department of Pharmacodynamics and Biopharmacy
237. SERRA BONVEHI, J (1991) Composition en sels minéraux et en vitamines de la gelée royale. *Bulletin Technique Apicole* 74 (18): 13-20.
238. SERRA BONVEHI, J; ESCOLA JORDA, R (1991) Study of the microbiological quality and bacteriostatic activity of queen food (royal jelly): effect of organic acids. *Deutsche Lebensmittel-Rundschau* 87 (8): 256-529.
239. SEYYEDI, F; RAFIEAN-KOPAEI, M; MIRAJ, S (2016) Comparison of the effects of vaginal royal jelly and vaginal estrogen on quality of life, sexual and urinary function in postmenopausal women. *Journal of clinical and diagnostic research* 10: QC01.
240. SHAHZADA, Q; MEHMOODB, M; KHANC, H; HUSNAD, A; QADEERD, S; AZAMD, A; NASEERE, Z; AHMADF, E; SAFDARG, M; AHMADB, M (2016) Royal jelly supplementation in semen extender enhances post-thaw quality and fertility of Nili-Ravi buffalo bull sperm. *Animal Reproduction Science* 167: 83-88.
241. SHEN, X; LU, R; HE, G (1995) Effects of lyophilized royal jelly on experimental hyperlipaemia and thrombosis 1434. *Zhonghua Yufang Yixue Zazhi* 29 (1): 27-29.

242. SHIDFAR, F; JAZAYERI, S; MOUSAVI, S; MALEK, M; HOSSEINI, A; KHOSHPEY, B (2015) Does Supplementation with Royal Jelly Improve Oxidative Stress and Insulin Resistance in Type 2 Diabetic Patients? *Iran J Public Health* 44: 797-803.
243. SHINODA, M; NAKAJIN, S; OIKAWA; SATO, K; KAMOGAWA, A; AKIYAMA, Y (1978) Biochemical studies on vasodilatative factor in royal jelly, in Japanese, English Abstract. *Yakugaku Zasshi* 98: 139-145.
244. SHKENDEROV, S; IVANOV, T (1983) Pcelni Produkti, The Bee Products (in Bulgarian). *Zemizdat (Abstract in Honey bibliography)*: 1-238.
245. SIAVASH, M; SHOKRI, S; HAGHIGHI, S; MOHAMMADI, M; SHAHTALEBI, M A; FARAJZADEHGAN, Z (2011) The efficacy of topical Royal Jelly on diabetic foot ulcers healing: A case series. *Journal of Research in Medical Sciences* 16 (7): 904-909.
246. SIAVASH, M; SHOKRI, S; HAGHIGHI, S; SHAHTALEBI, M A; FARAJZADEHGAN, Z (2016) The efficacy of topical royal jelly on healing of diabetic foot ulcers: a double-blind placebo-controlled clinical trial. *International wound journal*, 12: 137-142.
247. SIMSEK, N; KARADENIZ, A; BAYRAKTAROGLU, A G (2009) Effects of L-carnitine, Royal jelly and Pomegranate Seed on Peripheral Blood Cells in Rats. *Kafkas Universitesi Veteriner Fakultesi Dergisi* 15 (1): 63-69.
248. SIMÚTH, J (2001) Some properties of the main protein of honeybee (*Apis mellifera*) royal jelly. *Apidologie* 32 (1): 69-80.
249. SIMUTH, J; BILIKOVA, K (2004) Potential contribution of royal jelly proteins for health. *Honeybee Science* 25 (2): 53-62.
250. SIMUTH, J; BILIKOVA, K; KOVACOVA, E (2003) Royal jelly proteins as a tool for development of functional ingredients for health, *XXXVIII-th International Apicultural Congress*: pp Nr. 312.
251. SMIRNOVA, V (2008) Allergy towards bee products (in Russian), *Apitherapy today*, Ribnoe, 13.Oct.2008: pp 77-81.
252. SPIRIDONOV, N A; BAKANEVA, V F; NARIMANOV, A A; ARKHIPOV, V V (1989) Myotropic action and cytotoxicity of honey bee products 672. *Farmatsiya* 38 (4): 62-63.
253. SPULBER, E (1984) [Pulverizations of lyophilized royal jelly as an efficient method in the treatment of chronic diseases of the upper respiratory tract]. *Rev.Chir Oncol.Radiol.O.R.L Oftalmol.Stomatol.Otorinolaringol.* 29 (1): 59-66.
254. STOCKER, A (2003) Isolation and characterisation of substances from Royal Jelly. PhD Thesis; Université d'Orléans (France) Orléans (France); pp 1-202.
255. SUEMARU, K; CUI, R; LI, B; WATANABE, S; OKIHARA, K; HASHIMOTO, K; YAMADA, H; ARAKI, H (2008) Topical application of royal jelly has a healing effect on 5-fluorouracil-induced experimental oral mucositis in hamsters. *Methods and Findings in Experimental and Clinical Pharmacology* 30 (2): 103-106.
256. SUGIYAMA, T; TAKAHASHI, K; KUZUMAKI, A; TOKORO, S; NERI, P; MORI, H (2013) Inhibitory Mechanism of 10 Hydroxy trans 2 decenoic Acid (Royal Jelly Acid) Against Lipopolysaccharide- and Interferon-beta-Induced Nitric Oxide Production. *Inflammation* 36 (2): 372-378.
257. SUZUKI, K M; ISOHAMA, Y; MARUYAMA, H; YAMADA, Y; NARITA, Y; OHTA, S; ARAKI, Y; MIYATA, T; MISHIMA, S (2008) Estrogenic activities of fatty acids and a sterol isolated from royal jelly 34 77757. *Evidence-based complementary and alternative medicine* 5 (3): 295-302.
258. SVER, L; ORSOLIC, N; TADIC, Z; NJARI, B; VALPOTIC, I; BASIC, I (1996) A royal jelly as a new potential immunomodulator in rats and mice. *Comparative Immunology, Microbiology and Infectious Diseases* 19 (1): 31-38.

259. SZANTO, E; GRUBER, D; SATOR, M; KNOGLER, W; HUBER, J C (1994) [Placebo-controlled study of melbrosia in treatment of climacteric symptoms]. *Wiener Medizinische Wochenschrift* 144 (7): 130-133.
260. TAAVONI S; BARKHORDARI F; GOUSHEGIR A; HAGHANI H. (2014) Effect of Royal Jelly on premenstrual syndrome among Iranian medical sciences students: a randomized, triple-blind, placebo-controlled study. *Complement Ther Med.* 22: 601-606.
261. TAKAHASHI, M; MATSUO, I; OHKIDO, M (1983) Contact dermatitis due to honeybee royal jelly. *Contact Dermatitis* 9 (6): 452-455.
262. TAMURA, T; FUJII, A; KUBOYAMA, N (1987) Anti-tumor effects of royal jelly. *Nippon Yakurigaku Zasshi* 89 (2): 73-80.
263. TANIGUCHI, Y; KOHNO, K; INOUE, S; KOYA-MIYATA, S; OKAMOTO, I; ARAI, N; IWAKI, K; IKEDA, M; KURIMOTO, M (2003) Oral administration of royal jelly inhibits the development of atopic dermatitis-like skin lesions in NC/Nga mice. *International immunopharmacology* 3 (9): 1313-1324.
264. TARANTILIS, P A; PAPPAS, C S; ALISSANDRAKIS, E; HARIZANIS, P C; POLISSIOU, M G (2012) Monitoring of royal jelly protein degradation during storage using Fourier-transform infrared (FTIR) spectroscopy. *Journal of Apicultural Research* 51 (2): 185-192.
265. TARTAKOVSKAIA, A I (1966) [Apilak (royal jelly) in the therapy of trophic disorders of the cornea in eye burns]. *Vestnik Oftalmologii* 79 (1): 59-61.
266. TATSUHIKO, T; NAOKO, K; YUKO, H (2011) Application of the material of honeybee origin. Application of the cosmetic material of the honeybee origin (Japanese). *Frag J.* 30: 17-24.
267. TERADA, Y; NARUKAWA, M; WATANABE, T (2011) Specific Hydroxy Fatty Acids in Royal Jelly Activate TRPA1. *Journal of agricultural and food chemistry* 59 (6): 2627-2635.
268. TESTI, S; CECCHI, L; SEVERINO, M; MANFREDI, M; ERMINI, G; MACCHIA, D; CAPRETTI, S; CAMPI, P (2007) Severe anaphylaxis to royal jelly attributed to cefonicid. *Journal of investigational allergology & clinical immunology : official organ of the International Association of Asthmology (INTERASMA) and Sociedad Latinoamericana de Alergia e Inmunología* 17 (4): 281.
269. TIAN, J; ZHONG, F X (2010) 10-HDA on Proliferation of Primary Cultured Neurons in Hippocampus of Rat. *Journal of Shanxi University (Natural Science Edition)* 2: 032.
270. TOKUNAGA, K; SUZUKI, K; YOSHIDA, C; MARUYAMA, H; FUTAMURA, Y; ARAKI, Y; MISHIMA, S (2003) Effect of royal jelly treated with protease on blood pressure in spontaneously hypertensive rats. *Journal of the Japanese Society for Food Science and Technology Nippon Shokuhin Kagaku Kogaku Kaishi* 50 (10): 457-462.
271. TOKUNAGA, K; SUZUKI, K M; YOSHIDA, C; MARUYAMA, H; FUTAMURA, Y; ARAKI, Y; MISHIMA, S (2004) Antihypertensive mechanism of royal jelly treated with protease in spontaneously hypertensive rats. *Journal of the Japanese Society for Food Science and Technology Nippon Shokuhin Kagaku Kogaku Kaishi* 51 (1): 34-37.
272. TOKUNAGA, K; YOSHIDA, C; SUZUKI, K; MARUYAMA, H; FUTAMURA, Y; ARAKI, Y; MISHIMA, S (2004) Antihypertensive effect of peptides from royal jelly in spontaneously hypertensive rats. *Biological & Pharmaceutical Bulletin* 27 (2): 189-192.
273. TOWNSEND, G; MORGAN, J; TOLNAI, S; HAZLETT, B; MORTON, H; SHUEL, R W (1960) Studies on the in vitro antitumor activity of fatty acids from royal jelly. *Cancer Research* 20: 503-510.
274. TOWNSEND, G F; MORGAN, J F; HAZLETT, B (1959) Activity of 10-hydroxydecenoic acid from royal jelly against experimental leukaemia and ascitic tumours. *Nature* 183 (4670): 1270-1271.
275. TOWNSEND, G F; MORGAN, J F; TOLNAI, S; HAZLETT, B; MORTON, H J; SHUEL, R W (1960) Studies on the in vitro antitumor activity of fatty acids. I. 10-Hydroxy-2-decenoic acid from royal jelly. *Cancer Research* 20: 503-510.

276. TRAJKOVIC, V (1961) [The role of royal jelly in carcinogenesis]. *Stud.Gen.(Berl)* 89: 343-352.
277. TSURUMA, Y; MARUYAMA, H; ARAKI, Y (2011) Effect of a Glycoprotein (Apisin) in Royal Jelly on Proliferation and Differentiation in Skin Fibroblast and Osteoblastic Cells. *Journal of the Japanese Society for Food Science and Technology-Nippon Shokuhin Kagaku Kogaku Kaishi* 58 (3): 121-126.
278. VALIUKIENE, K; CEREMNYCH, E; GAIGALIENE, B (1997) Effects of Apilac (royal jelly) on health, *35th Apimondia Congress in Anvers, Belgium*: pp 497.
279. VASILEVA, M (1962) Primenenie preparata matochnoe molochko pri lechenie ditrofii u detei ranech vozrosti. *Inform.Bulletin o matochnoe molochko, Rjazan* (3): 54-58.
280. VECCHI, M A; SABATINI, A G; GRAZIA, L; TINI, V; ZAMBONELLI, C (1988) Il contenuto in vitamine come possibile elemento di caratterizzazione della gelatina reale. *Apicoltura* 4: 139-146.
281. VITTEK, J (1970) Isolation of the mucin binding glycoprotein from royal jelly of bee. *Biologia* 25 (9): 593-597.
282. VITTEK, J (1995) Effect of royal jelly on serum lipids in experimental animals and humans with atherosclerosis. *Experientia* 51 (9-10): 927-935.
283. VITTEK, J; HALMOS, J (1968) [Study of the remineralization of the rabbit bone wound in vivo using absorption roentgenography]. *Ceskoslovenska Stomatologie* 68 (1): 1-5.
284. VITTEK, J; JANCI, J (1968) *Vcelia materskaksieka*. Slov. vi. podoh., it. Bratislava
285. VITTEK, J; SLOMIANY, B (1984) Testosterone in royal jelly. *Cellular and Molecular Life Sciences* 40: 104-106.
286. VUCEVIC, D; MELLIYOU, E; VASILIJIC, S; GASIC, S; IVANOVSKI, P; CHINO, I; COLIC, M (2007) Fatty acids isolated from royal jelly modulate dendritic cell-mediated immune response in vitro. *International immunopharmacology* 7 (9): 1211-1220.
287. WAGNER, H; DOBLER, I; THIEM, I (1970) [Effect of food-juice of the queen bee (royal jelly) on the peripheral blood and the survival rate of mice after whole body x-irradiation]. *Radiobiol.Radiother.(Berl)* 11 (3): 323-328.
288. WANG, X (2016) Studies of Molecular Mechanisms of Royal Jelly Mediated Healthspan Promotion in *Caenorhabditis Elegans*. PhD Clemson University; Clemson, USA
289. WATANABE, K; SHINMOTO, H; KOBORI, M; TSUSHIDA, T; SHINOHARA, K; KANAEDA, J; YONEKURA, M (1996) Growth stimulation with honey royal jelly DIII protein of human lymphocytic cell lines in a serum-free medium. *Biotechnology Techniques* 10 (12): 959-962.
290. WATANABE, S; SUEMARU, K; TAKECHI, K; ARAKI, H (2011) Royal jelly accelerates the recovery from 5-fluorouracil-induced oral mucositis in hamsters. *Journal of Pharmacological Sciences* 115: 265P.
291. WATANABE, S; SUEMARU, K; TAKECHI, K; KAJI, H; IMAI, K; ARAKI, H (2013) Oral Mucosal Adhesive Films Containing Royal Jelly Accelerate Recovery From 5-Fluorouracil-Induced Oral Mucositis. *Journal of Pharmacological Sciences* 121 (2): 110-118.
292. WEI, W; WEI, M; KANG, X J; DENG, H H; LU, Z H (2009) A novel method developed for acetylcholine detection in royal jelly by using capillary electrophoresis coupled with electrogenerated chemiluminescence based on a simple reaction. *Electrophoresis* 30 (11): 1949-1952.
293. XIAO, J; WANG, R; LI, S (1996) An active peptide inhibiting bacteria in the royal jelly of honey bee. *Acta Entomologica Sinica* 39 (2): 133-140.
294. XIAO, J W; WANG, R J; LI, S W (1996) An active peptide inhibiting bacteria in the royal jelly of honey bee. *Acta Entomologica Sinica* 39 (2): 133-140.
295. XU, D; MEI, X; XU, S (2002) The research of 10-hydroxy-2-decenoic acid on experiment hyperlipoidemic rat. *Journal of Chinese medicinal materials* 25 (5): 346-347.

296. XUE, X F; ZHOU, J H; WU, L M; FU, L H; ZHAO, J (2009) HPLC determination of adenosine in royal jelly. *Food Chemistry* 115 (2): 715-719.
297. YAMADA, K; IKEDA, I; SUGAHARA, T; SHIRAHATA, S; MURAKAMI, H (1989) Screening of immunoglobulin production stimulating factor (IPSF) in foodstuffs using human-human hybridoma HB4C5 cells 784. *Agricultural and Biological Chemistry* 53 (11): 2987-2991.
298. YAMADA, K; IKEDE, I; MAEDA, M; SHIRAHATA, S; MURAKAMI, H (1990) Effect of immunoglobulin production stimulating factors in foodstuffs on immunoglobulin production of human lymphocytes. *Agricultural and Biological Chemistry* 54 (4): 1087-1089.
299. YAMAURA, K; TOMONO, A; SUWA, E; UENO, K (2013) Topical royal jelly alleviates symptoms of pruritus in a murine model of allergic contact dermatitis. *Pharmacognosy Magazine* 9 (33): 9-13.
300. YANAGITA, M; KOJIMA, Y; MORI, K; YAMADA, S; MURAKAMI, S (2011) Osteoinductive and anti-inflammatory effect of royal jelly on periodontal ligament cells. *Biomedical Research-Tokyo* 32 (4): 285-291.
301. YANG, X Y; YANG, D S; WEI, Z; WANG, J M; LI, C Y; YE, H; LEI, K F; CHEN, X F; SHEN, N H; JIN, L Q; WANG, J G (2010) 10-Hydroxy-2-decenoic acid from Royal jelly: A potential medicine for RA. *Journal of Ethnopharmacology* 128 (2): 314-321.
302. YATSUNAMI, K; ECHIGO, T (1985) Antibacterial action of royal jelly. *Bulletin of the Faculty of Agriculture* (25): 13-22.
303. YONEKURA, M (1998) Characterization and physiological function of royal jelly proteins. *Honeybee Science* 19 (1): 15-22.
304. YUCEL , B; ACIKGOZ , Z; BAYRAKTAR, H; SEREMET, C (2011) The Effects of Apilarnil (Drone Bee Larvae) Administration on Growth Performance and Secondary Sex Characteristics of Male Broilers. *J.Anim.Vet Adv* 10: 2263-2266.
305. ZAHARAN, A E A (2016) Effects of royal jelly supplementation on regulatory T cells in children with SLE. *Food & Nutrition Research* 60
306. ZAMAMI, Y; TAKATORI, S; GODA, M; KOYAMA, T; IWATANI, Y; JIN, X; TAKAI-DOI, S; KAWASAKI, H (2008) Royal Jelly Ameliorates Insulin Resistance in Fructose-Drinking Rats. *Biological & Pharmaceutical Bulletin* 31 (11): 2103-2107.
307. ZAMANI, Z; REISI, P; ALAEI, H; PILEHVARIAN, A A (2012) Effect of Royal Jelly on spatial learning and memory in rat model of streptozotocin-induced sporadic Alzheimer's disease. *Advanced biomedical research* 1,doi: 10.4103/2277-9175.98150
308. ZHENG, H Q; WEI, W T; WU, L M; HU, F L; DIETEMANN, V (2012) Fast Determination of Royal Jelly Freshness by a Chromogenic Reaction. *Journal of Food Science* 77 (6): S247-S252.
309. ZWEER, V (1962) Vlijanie preparata matochnoe molochko na povishenii laktatzii u roditelnic i vostonovlenie vesa u novorodenich. *Inform.Bulletin o matochnoe molochko, Rjazan* (3): 95-108.
310. ZWEER, V (1962) Vostonovlenie belkov i ich frakctiei v krovi roditelnic posle patologicheskikh krovopoter pri lechenie preparatom matochnoe molochko. *Inform.Bulletin o matochnoe molochko, Rjazan* (3): 75-85.
311. ZWEER, V (1974) Influence of apilac in climacterium syndrom. *Inform.Bulletin o matochnoe molochko, Rjazan* (4): 134-138.